

ALSO SEE SURVEYS 00-093-C, 07-076-C, Q-0291-AX, 04-129-G

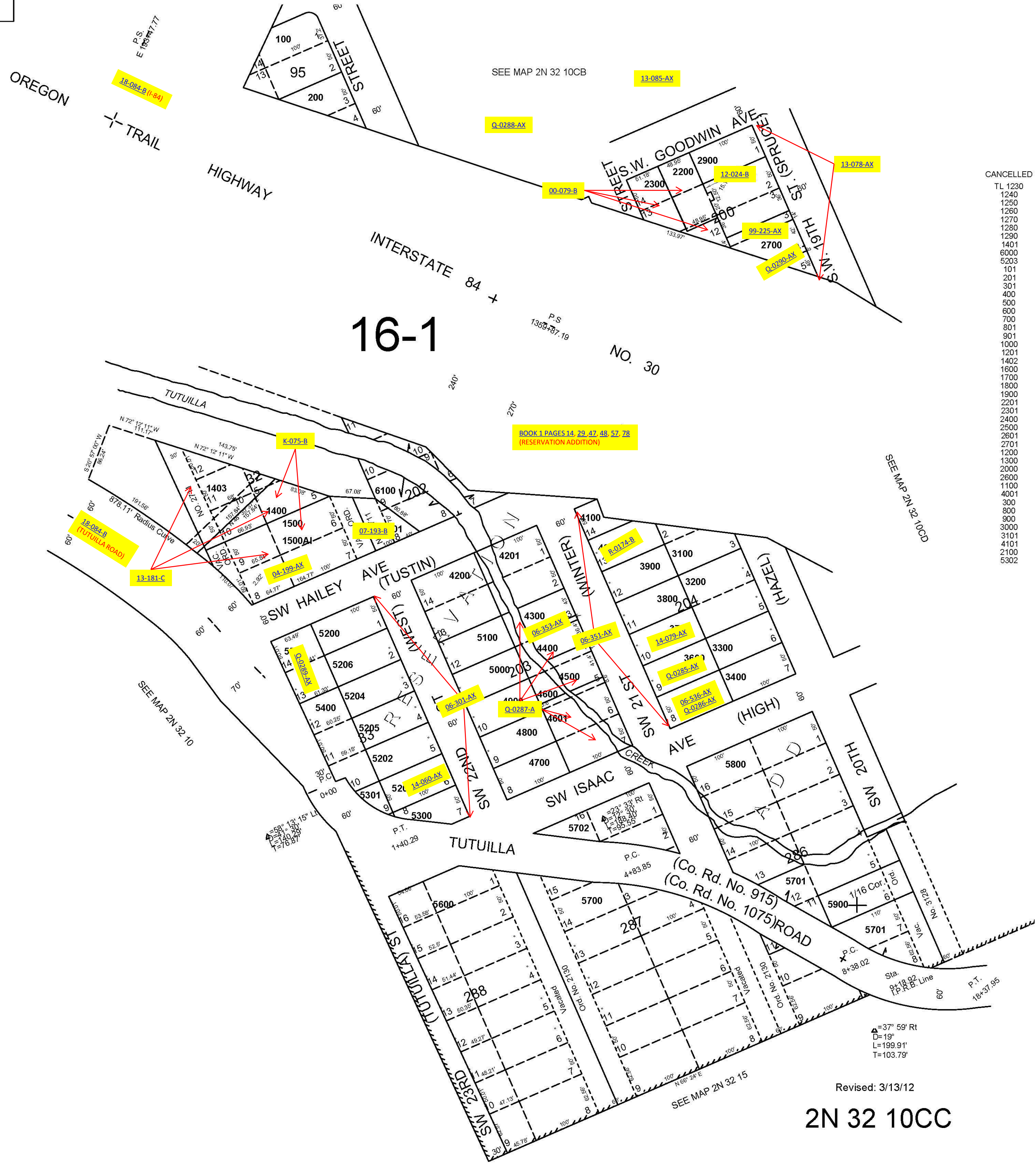
This map was prepared for Assessment & Taxation purposes only and was NOT prepared nor is it suitable for legal, engineering or surveying purposes.

UMATILLA COUNTY

1"=100'

SW1/4 SW1/4 SEC 10 T2N R32E WM

2N 32 10CC



- CANCELLED
- TL 1230
- 1240
- 1250
- 1260
- 1270
- 1280
- 1290
- 1401
- 6000
- 5203
- 101
- 201
- 301
- 400
- 500
- 600
- 700
- 801
- 901
- 1000
- 1201
- 1402
- 1600
- 1700
- 1800
- 1900
- 2201
- 2301
- 2400
- 2500
- 2601
- 2701
- 1200
- 1300
- 2000
- 2800
- 1100
- 4001
- 300
- 800
- 900
- 3000
- 3101
- 4101
- 2100
- 5302

9	10
16	15

A=37° 59' Rt
D=19'
L=199.91'
T=103.79'

Revised: 3/13/12
2N 32 10CC