

This map was prepared for Assessment & Taxation purposes only and was NOT prepared nor is it suitable for legal, engineering or surveying purposes.

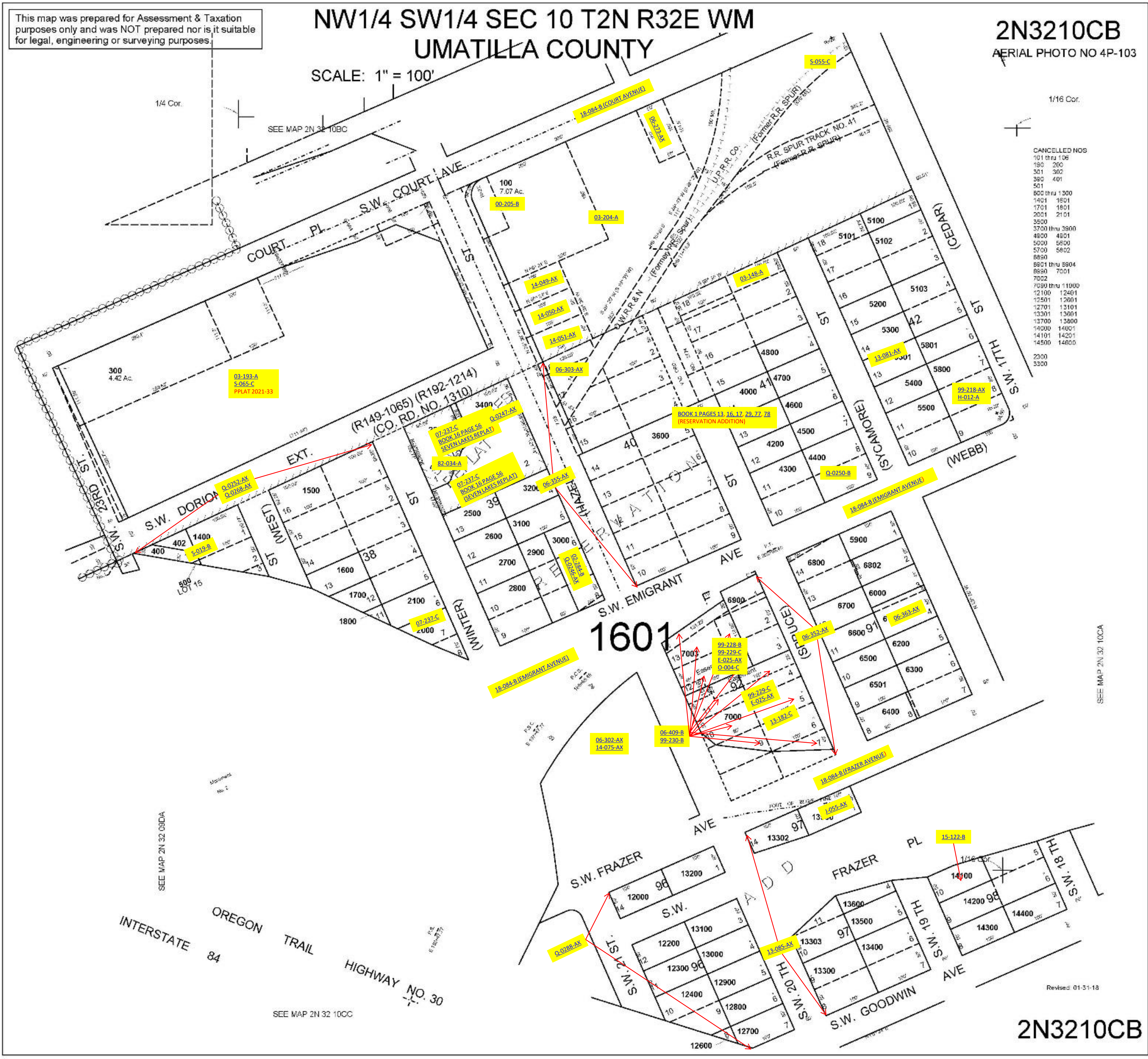
NW1/4 SW1/4 SEC 10 T2N R32E WM UMATILLA COUNTY

2N3210CB
AERIAL PHOTO NO 4P-103

SCALE: 1" = 100'

1/16 Cor.

- CANCELLED NOS
- 101 thru 106
 - 150 200
 - 301 302
 - 380 401
 - 501
 - 600 thru 1300
 - 1401 1601
 - 1701 1801
 - 2001 2101
 - 3500
 - 3700 thru 3900
 - 4800 4901
 - 5000 5600
 - 5700 5802
 - 6800
 - 6801 thru 6804
 - 6800 7001
 - 7002
 - 7000 thru 11000
 - 12100 12401
 - 12501 12601
 - 12701 13101
 - 13301 13601
 - 13700 13800
 - 14000 14001
 - 14101 14201
 - 14500 14800
 - 2300
 - 3300



SEE MAP 2N 32 10CA

SEE MAP 2N 32 08DA

SEE MAP 2N 32 10CC

2N3210CB