

ALSO SEE SURVEYS 05-074-B, 13-023-C, Q-0311-AX, Q-0320-B, Q-1287-AX, Q-1467-A

This map was prepared for Assessment & Taxation purposes only and was NOT prepared nor is it suitable for legal, engineering or surveying purposes.

# SW 1/4 NW 1/4 SEC 10 T2N R32E WM UMATILLA COUNTY

Pendleton

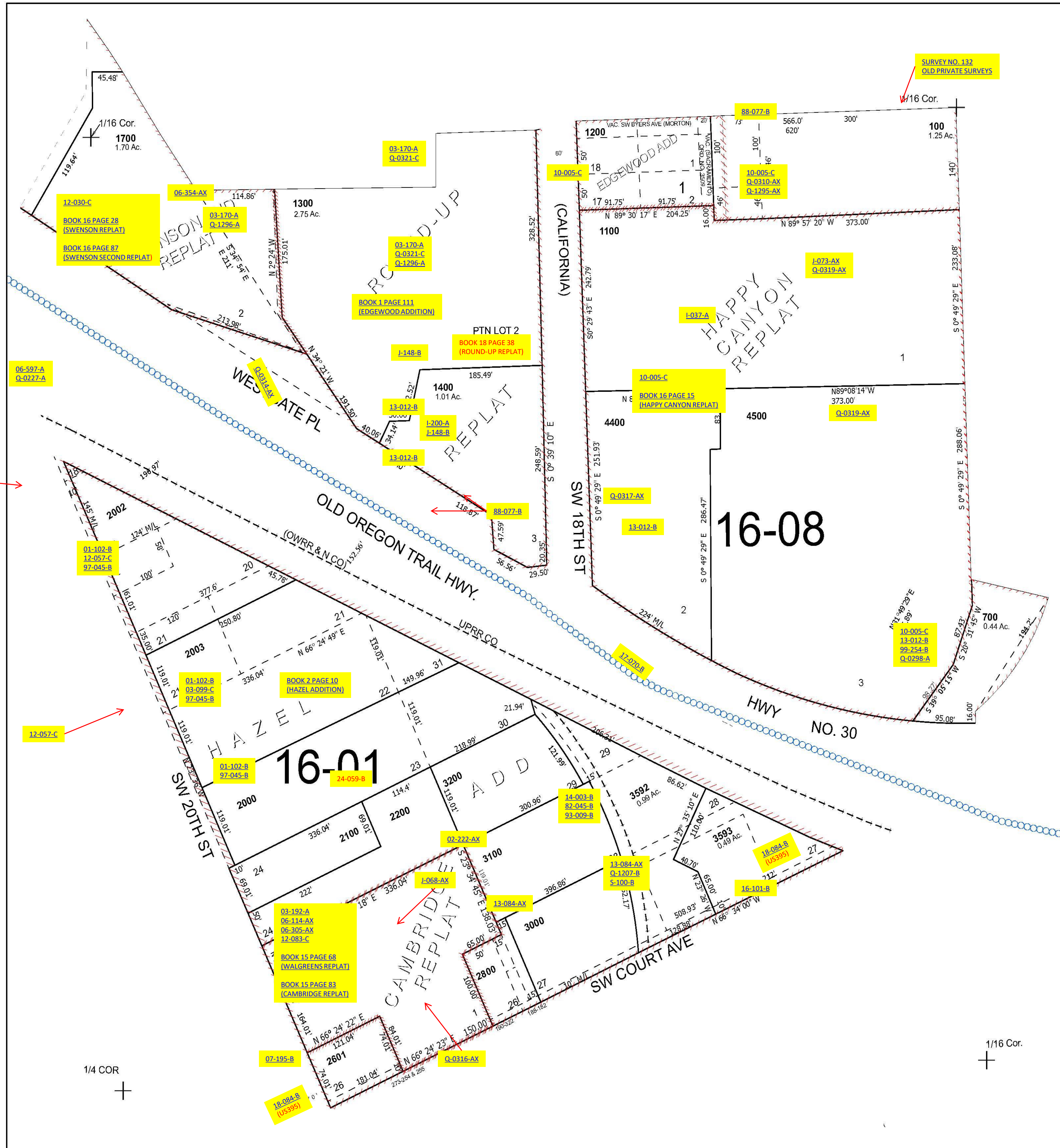
SCALE 1" = 100'

## 2N 32 10BC

Cancelled Tax Lots

100	1301	2400	3590
200	1470	2500	3591
201	1480	2600	3600
300	1490	2700-2702	3700
400	1491	2800	3800
600	1500	2900	3900
601	1600	3300	4000
800	1800	3400	4100
900	1900-1903	3500	4200
1000	2001	3501	4300

See Map 2N 32 10BB



Revised 12/18/2024

See Map 2N 32 10CB

## 2N 32 10BC