

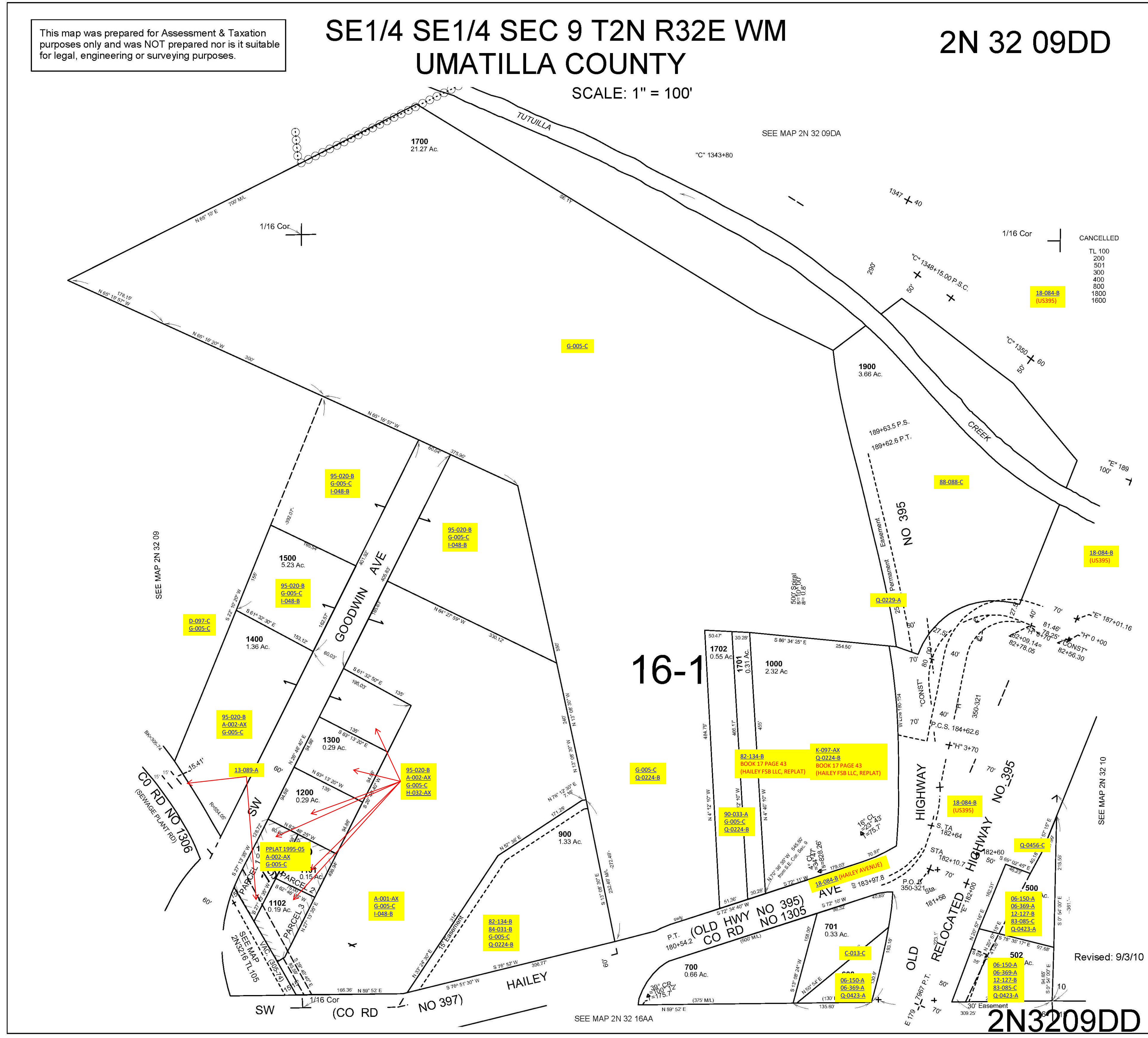
ALSO SEE SURVEY 14-047-AX

This map was prepared for Assessment & Taxation purposes only and was NOT prepared nor is it suitable for legal, engineering or surveying purposes.

# SE1/4 SE1/4 SEC 9 T2N R32E WM UMATILLA COUNTY

## 2N 32 09DD

SCALE: 1" = 100'



Revised: 9/3/10

## 2N3209DD