

ALSO SEE SURVEY 04-129-G

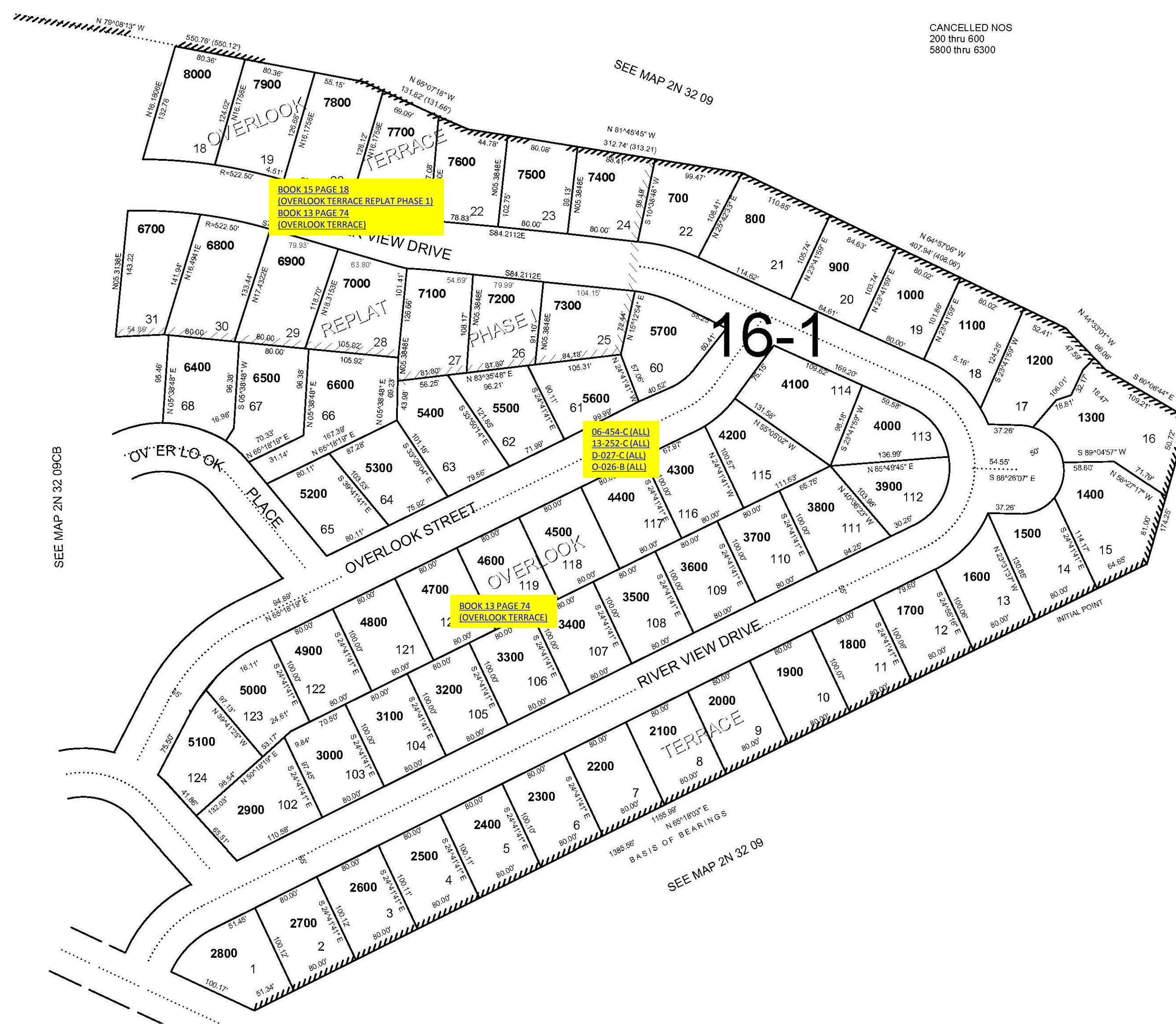
This map was prepared for Assessment and Taxation purposes only and has NOT been prepared for legal, engineering or surveying purposes.

NE1/4 SW1/4 SEC 9 T2N R32E WM  
UMATILLA COUNTY  
1"=100'

12/06/06

2N 32 09CA

AERIAL PHOTO NO 4P-104



2N 32 09CA