

ALSO SEE SURVEY 04-129-G

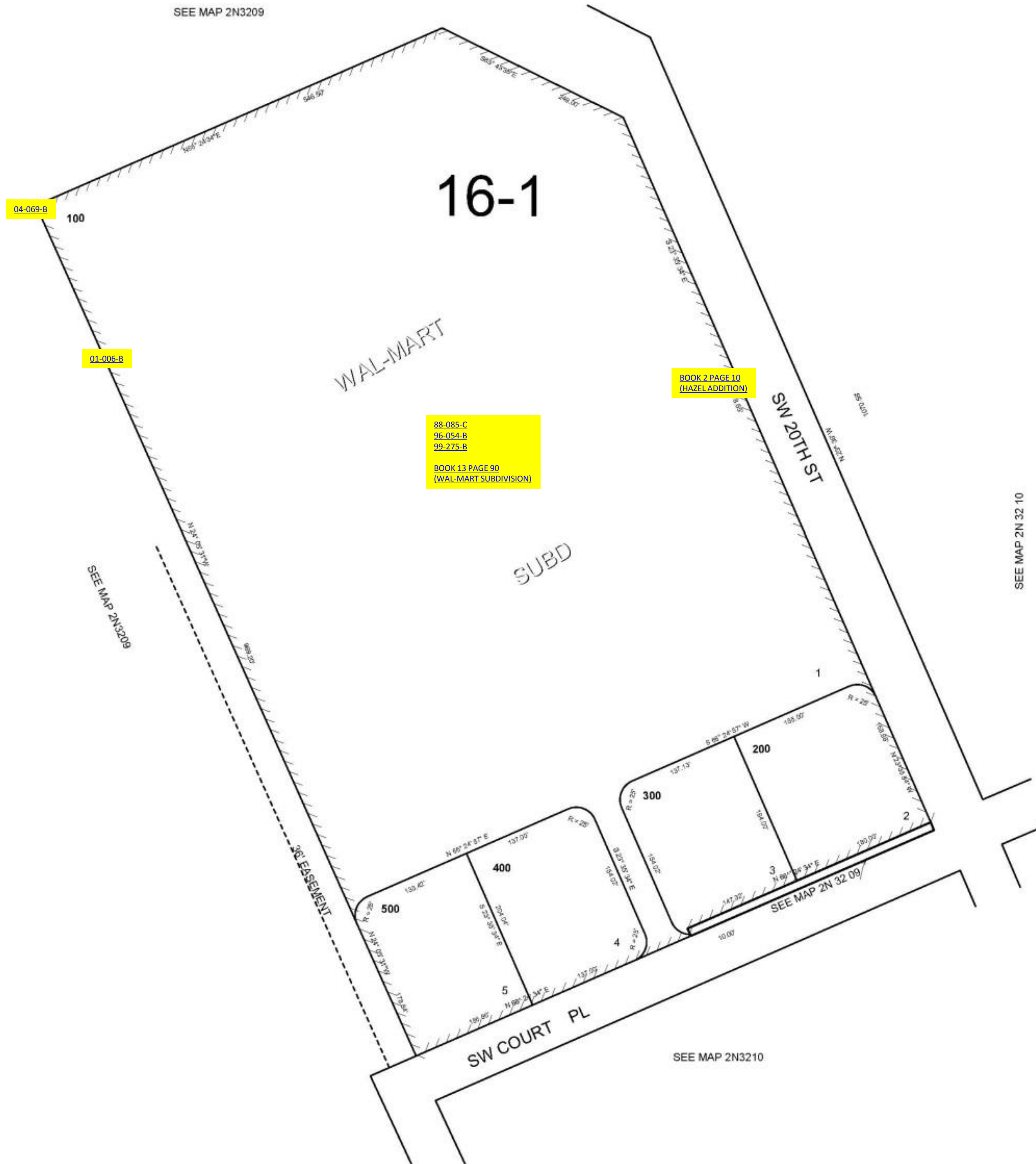
This map was prepared for Assessment & Taxation purposes only and was NOT prepared nor is it suitable for legal, engineering or surveying purposes.



SE1/4 NE1/4 SEC 9 T2N R32E WM UMATILLA COUNTY, OR

2N3209AC
AERIAL PHOTO NO 4P-104

SCALE: 1" = 100'



Revised: 8/6/09
2N3209AC