

ALSO SEE SURVEYS 05-068-B, 07-095-A

This map was prepared for Assessment & Taxation purposes only and was NOT prepared nor is it suitable for legal, engineering or surveying purposes.

# SE 1/4 SE 1/4 SEC 02 T2N R32E WM UMATILLA COUNTY

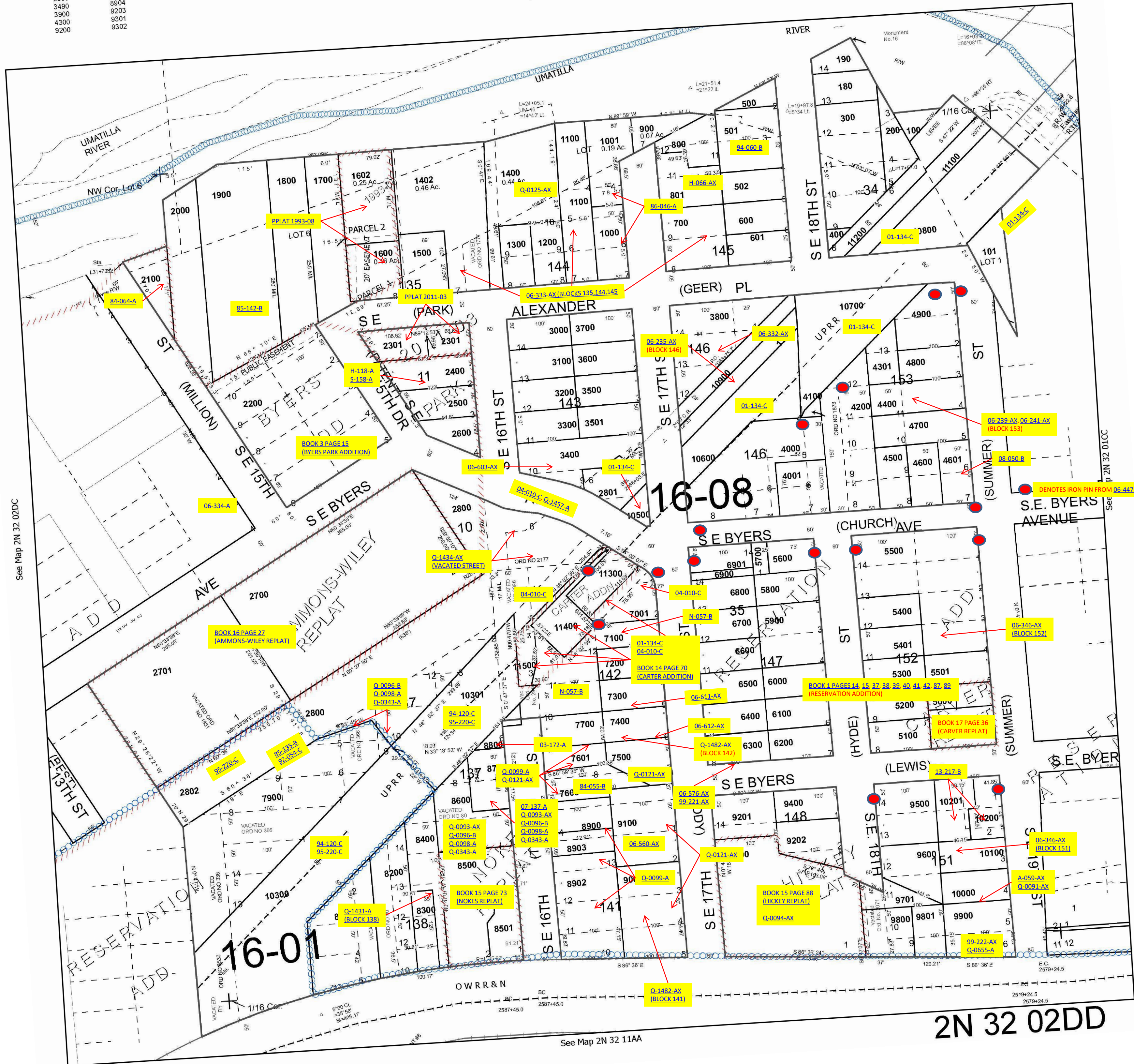
SCALE 1" = 100'

Pendleton

2N 32 02DD

Cancelled Tax Lots		
1002	7000	9401
1101	7201	9700
1401	7501	10400
1501	7800	
1601	8000	
2900	8901	
3490	8904	
3900	9203	
4300	9301	
9200	9302	

See Map 2N 32 02



See Map 2N 32 02DC

See Map 2N 32 11AA

Revised 12/23/2022

2N 32 02DD