

ALSO SEE SURVEYS 07-151-B, 07-152-B, 07-153-A, 07-156-B

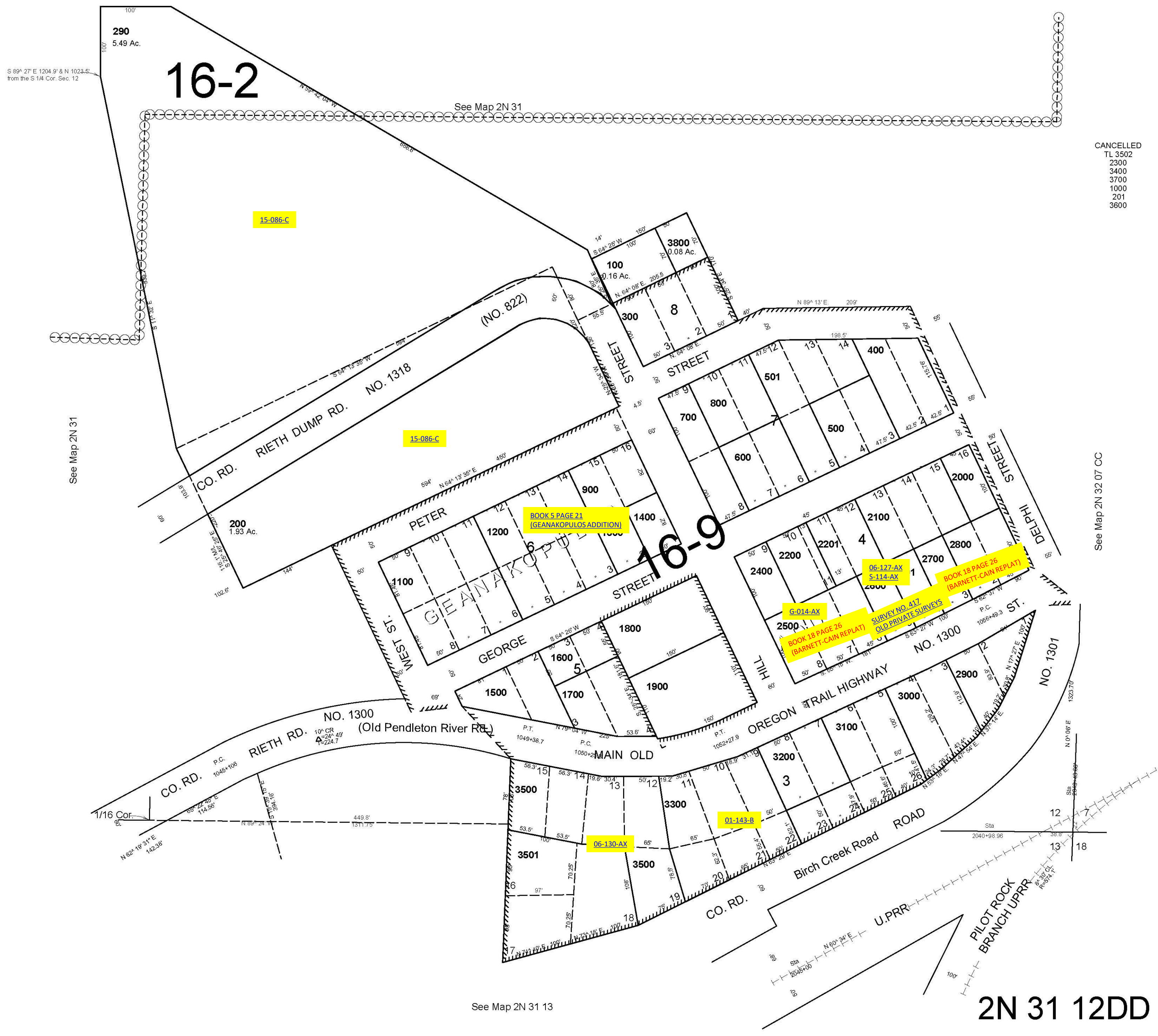
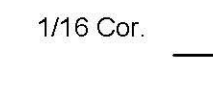
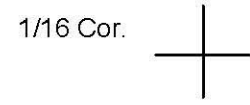
This map was prepared for assessment purposes

# SE1/4 SE1/4 SEC 12 T2N R31E WM UMATILLA COUNTY

9/08/06

2N 31 12DD  
AERIAL PHOTO NO. 2P-191

SCALE 1"=100'



CANCELLED  
TL 3502  
2300  
3400  
3700  
1000  
201  
3600

See Map 2N 32 07 CC

See Map 2N 31 13

2N 31 12DD