

This map was prepared for Assessment & Taxation purposes only and was NOT prepared nor is it suitable for legal, engineering or surveying purposes.

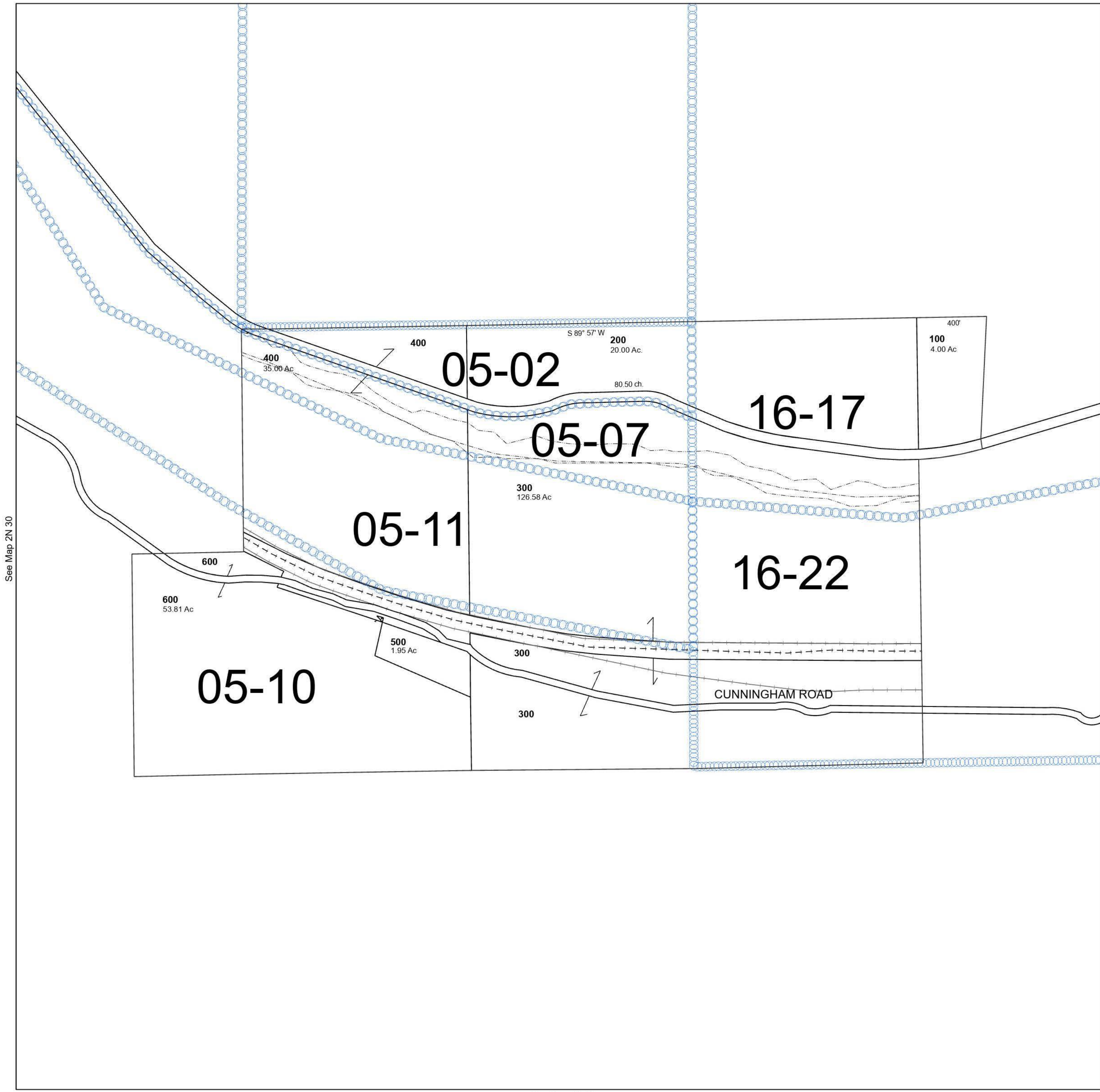
Cancelled Tax Lots

# SEC 09 T2N R30E WM UMATILLA COUNTY

## 2N 30 09

SCALE 1" = 400'

See Map 2N 30



Revised 8/31/2023

See Map 2N 30

## 2N 30 09