

This map was prepared for Assessment & Taxation purposes only and was NOT prepared nor is it suitable for legal, engineering or surveying purposes.

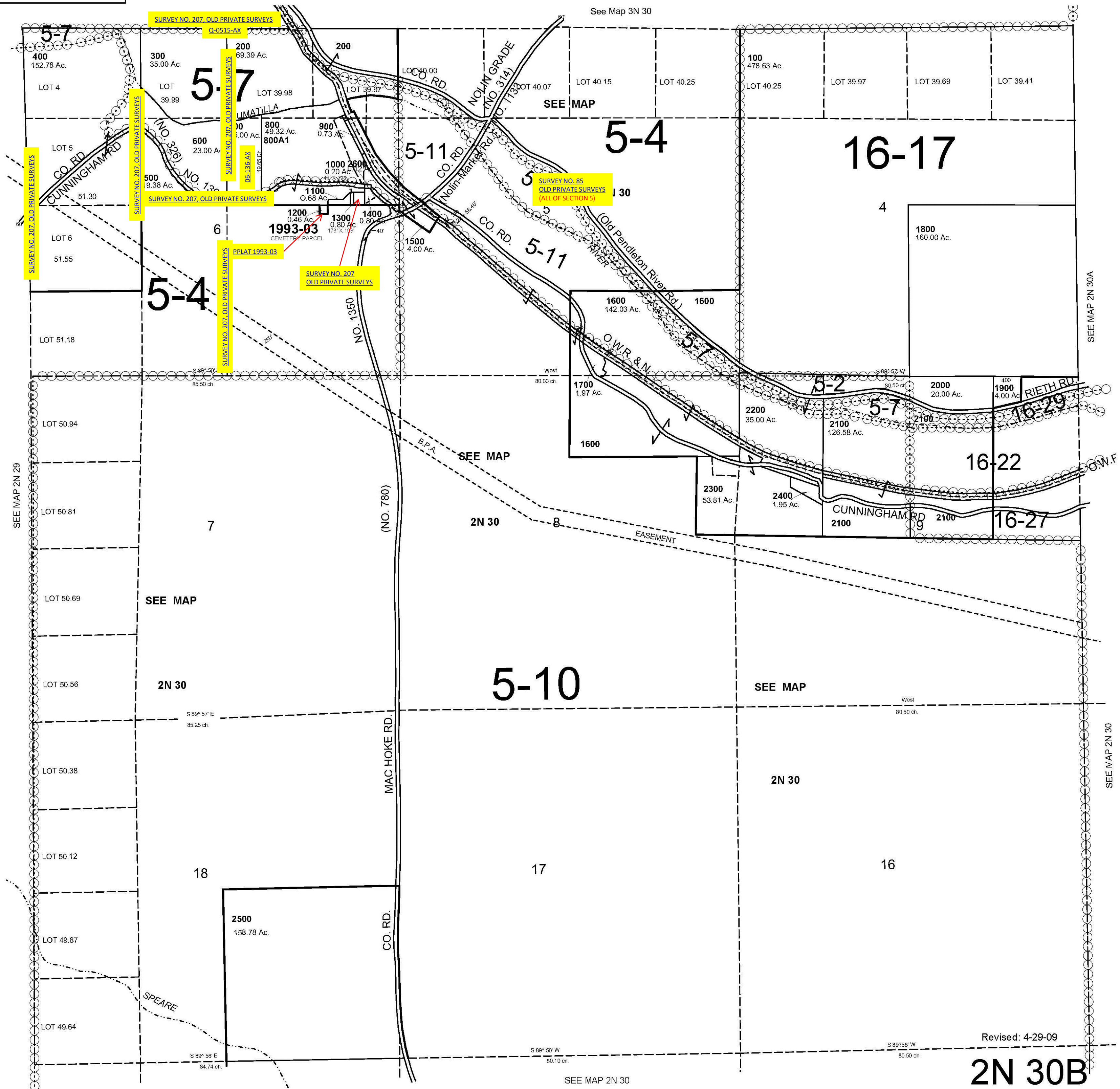
NW1/4 T2N R30E WM

UMATILLA COUNTY

2N 30B

AERIAL PHOTO NO. 2P 179-185, 3P 17-22 & 38-44

1" = 1000'



Revised: 4-29-09

2N 30B