

This map was prepared for Assessment & Taxation purposes only and was NOT prepared nor is it suitable for legal, engineering or surveying purposes.

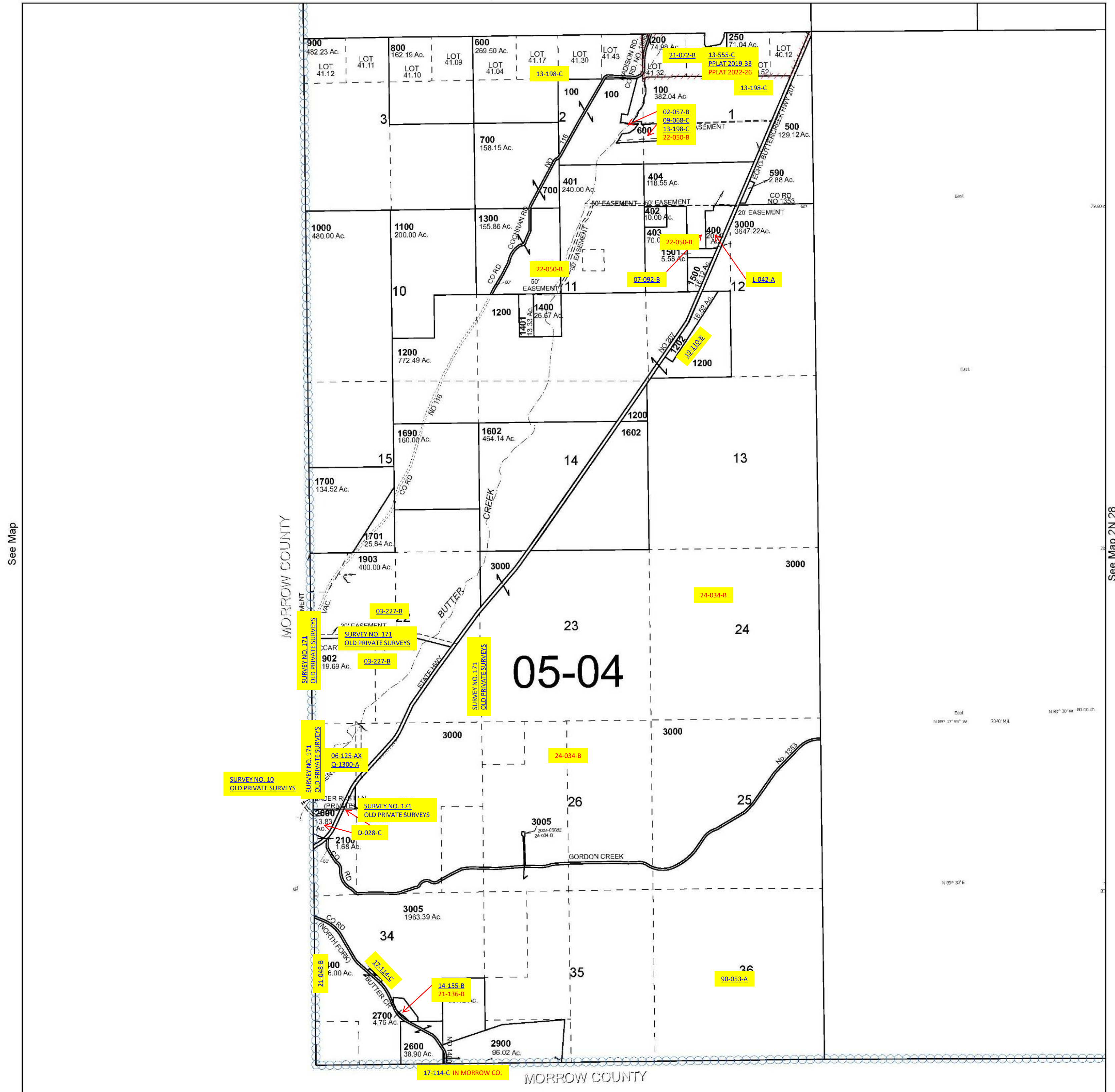
T2N R27E WM UMATILLA COUNTY

SCALE 1" = 2,000'

2N 27

Cancelled Tax Lots	
300	2101
501	2201
1201	2202
1601	2300
1603-1605	2500
1800	3001-3004
1900	3006
1901	3007
1904-1907	3007
2001	

See Map 3N 27



See Map

See Map 2N 28

Revised 12/18/2024

See Map

2N 27