

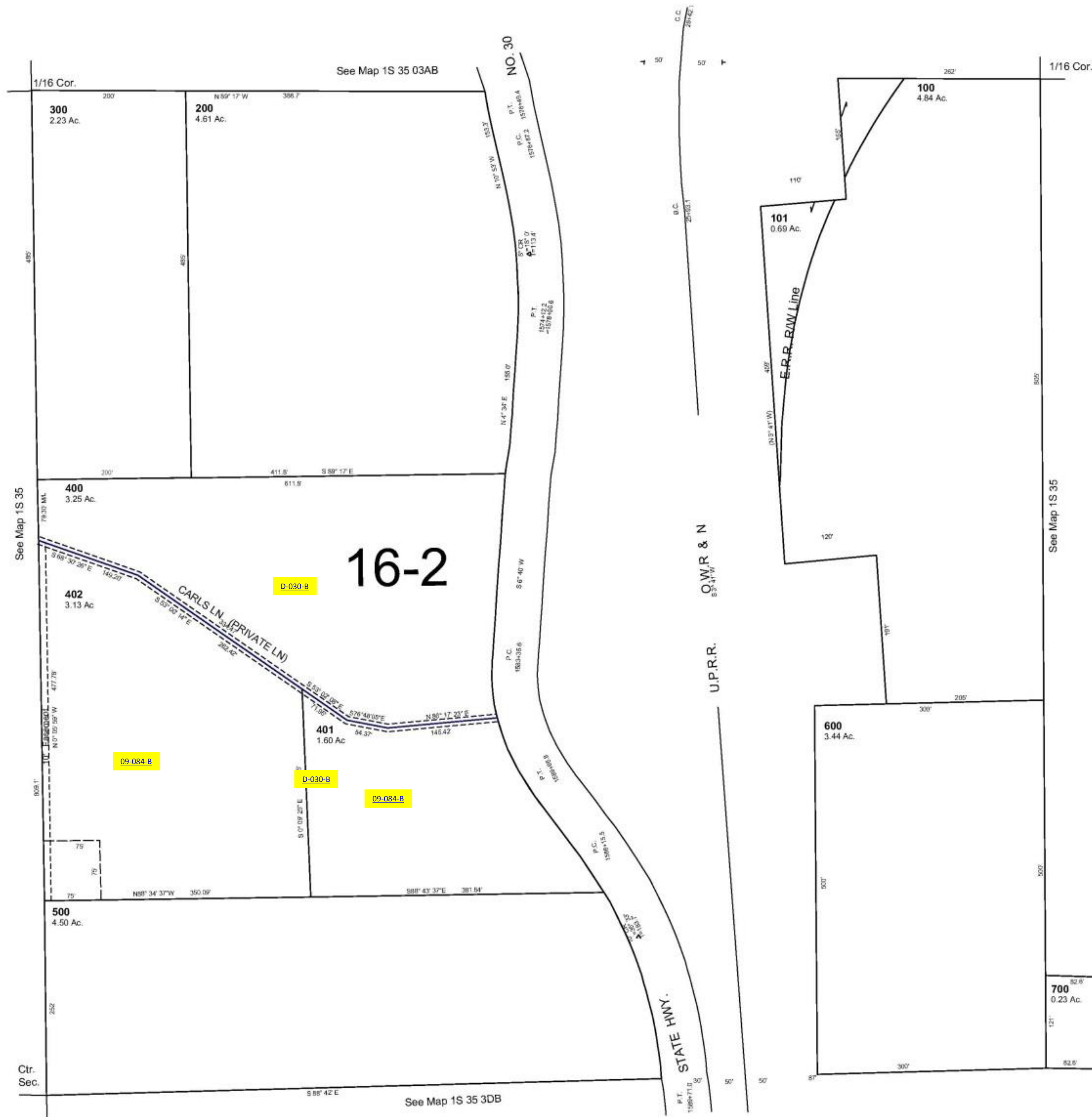
This map was prepared for Assessment & Taxation purposes only and was NOT prepared nor is it suitable for legal, engineering or surveying purposes.

SW1/4 NE1/4 SEC 3 T1S R35E WM UMATILLA COUNTY

SCALE 1"=100'

1S 35 03AC

AERIAL PHOTO NO. 7P-5 & 6



1S 35 03AC