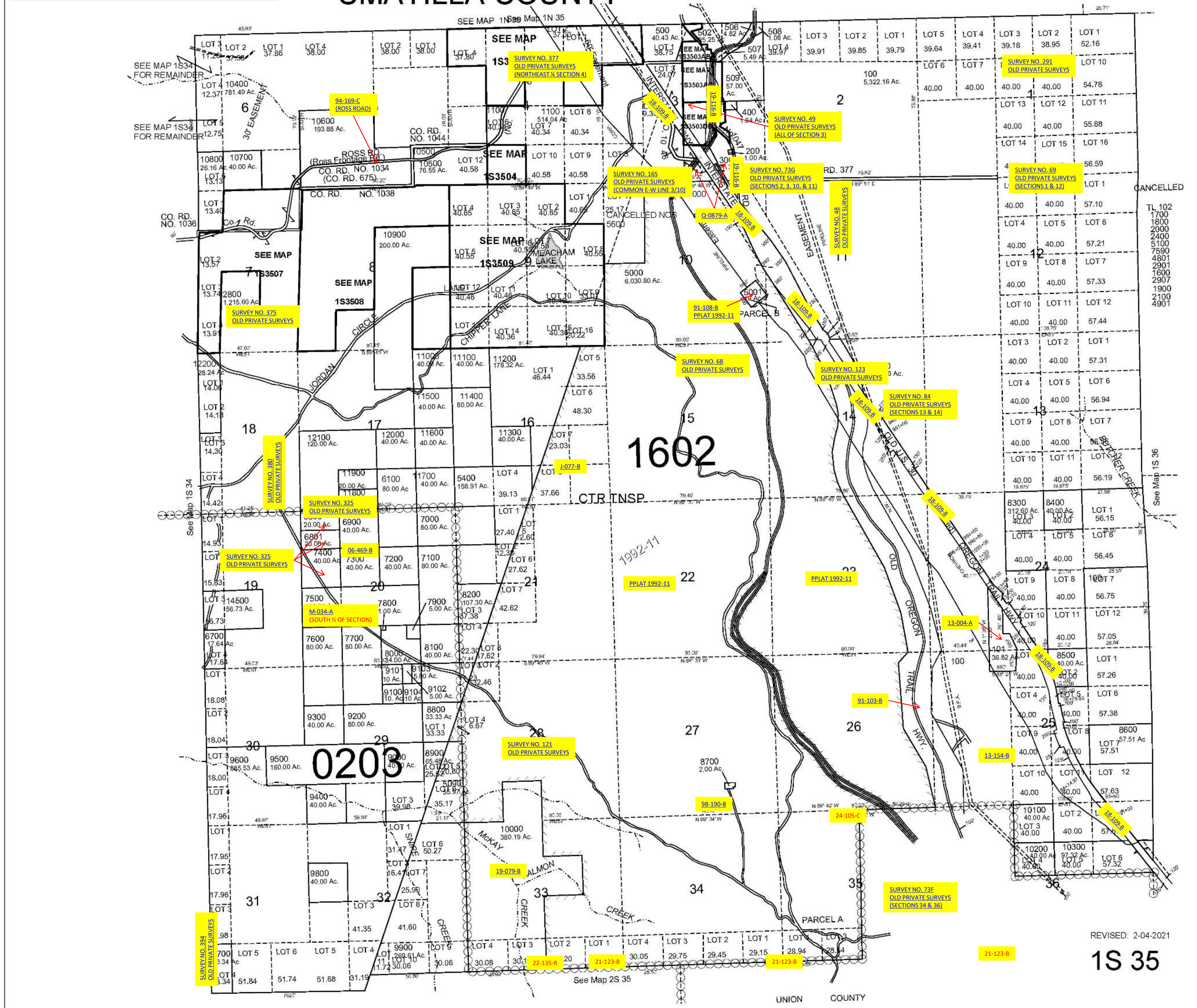


This map was prepared for Assessment & Taxation purposes only and was NOT prepared nor is it suitable for legal, engineering or surveying purposes.

T1S R35E WM UMATILLA COUNTY

SCALE 1"=2000'

1S 35
AERIAL PHOTO NO. NZ-7P 5-10 AND 85-94



REVISED: 2-04-2021

1S 35