

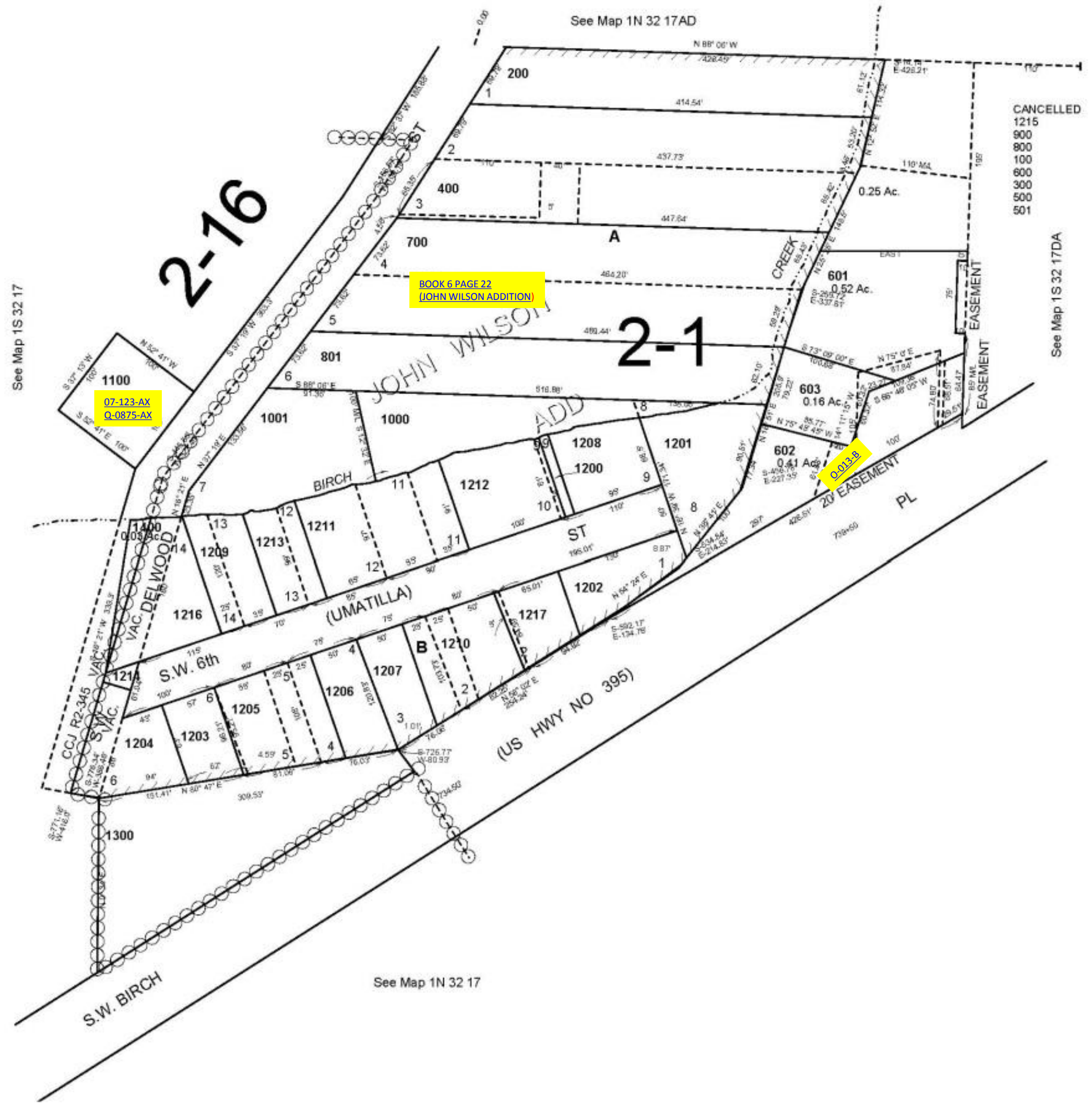
This map was prepared for Assessment & Taxation purposes only and was NOT prepared nor is it suitable for legal, engineering or surveying purposes.



NW1/4 SE1/4 SEC 17 T1S R32E WM UMATILLA COUNTY

SCALE: 1" = 100'

1S 32 17DB
AERIAL PHOTO NO. 7P-69



Revised: 6/13/11

1S 32 17DB