

ALSO SEE SURVEYS 05-066-C, 02-008-B, Q-0853-A, Q-0854-AX, Q-0856-AX, Q-0857-AX, Q-0925-C, Q-1363-C

This map was prepared for Assessment & Taxation purposes only and was NOT prepared nor is it suitable for legal, engineering or surveying purposes.

NE 1/4 NE 1/4 SEC 17 T1S R32E WM UMATILLA COUNTY

Pilot Rock

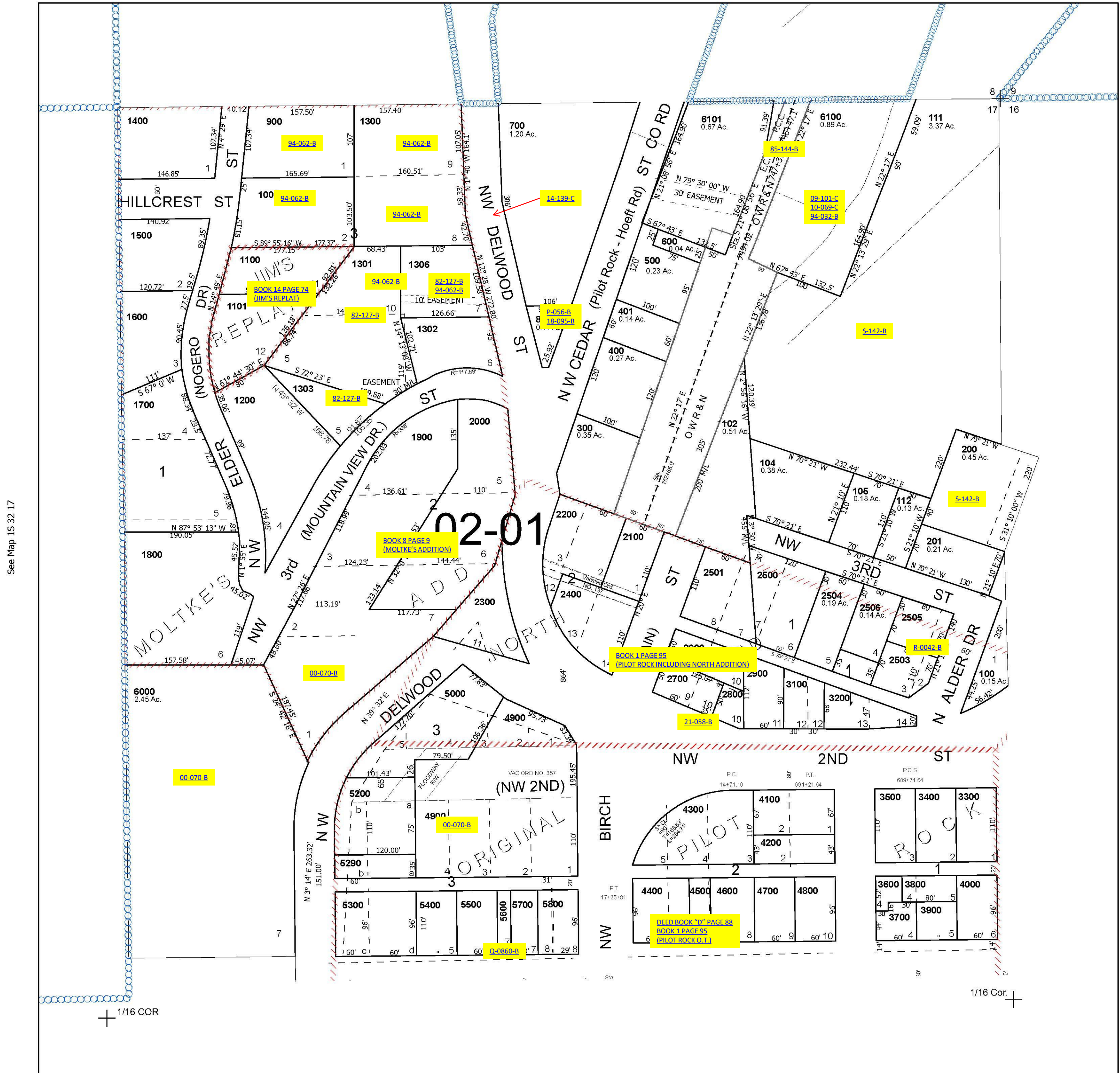
SCALE 1" = 100'

1S 32 17AA

Cancelled Tax Lots

101	1801
103	2502
106	2507
107	3000
108	5090
109	5100
110	5801
801	5900
1304	5901
1305	

See Map 1S 32 08D



See Map 1S 32 17

See Map 1S 32 16BB

Revised 11/5/2024

See Map 1S 32 17AD

1S 32 17AA