

ALSO SEE SURVEYS 03-060-B, 97-140-C, 95-205-B; CORNER RECORDS; G.L.O. SURVEYS

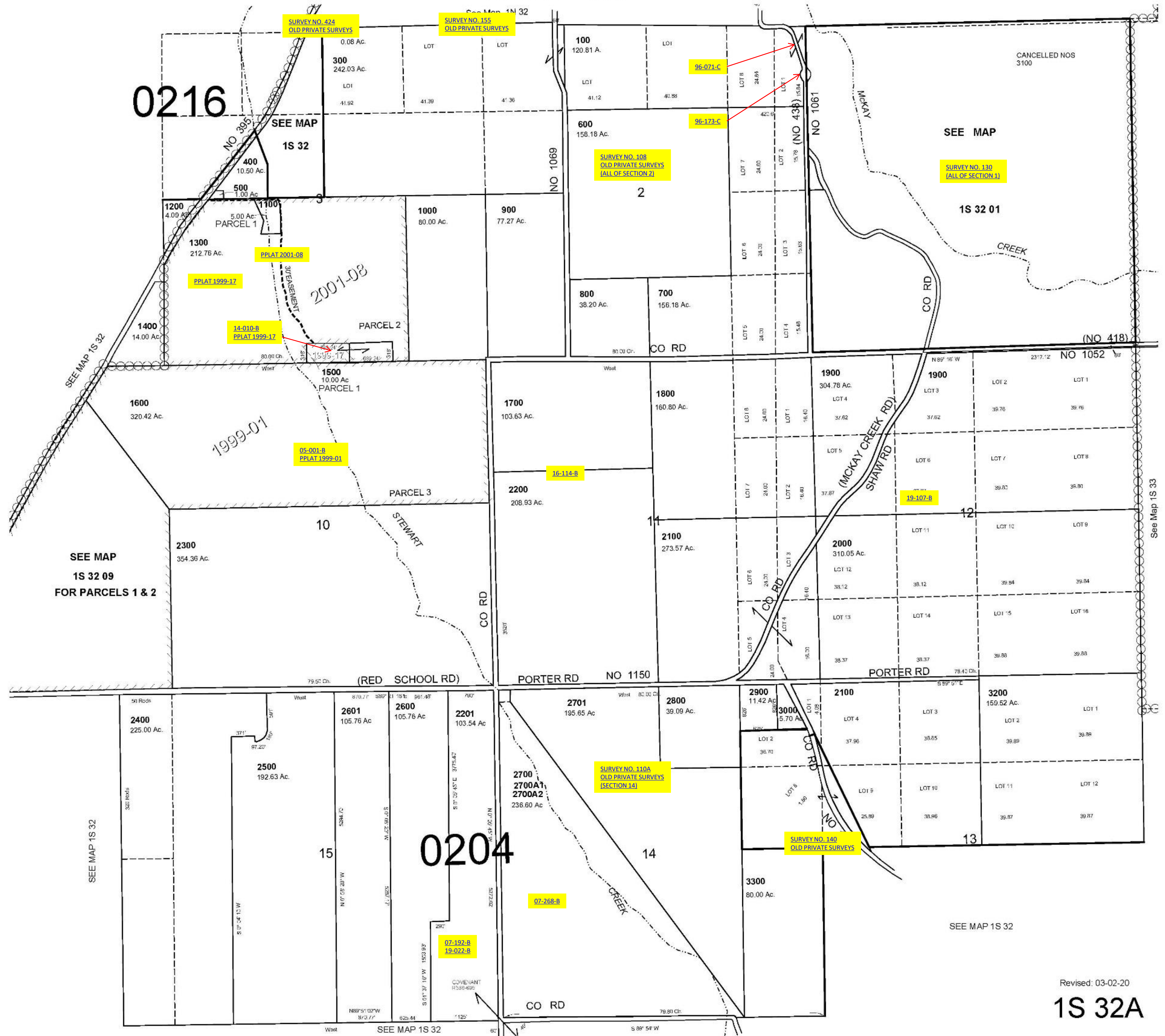
This map was prepared for Assessment & Taxation purposes only and was NOT prepared nor is it suitable for legal, engineering or surveying purposes.

# NE1/4 T1S R32E WM UMATILLA COUNTY

## 1S 32A

SCALE 1"=1000'

AERIAL PHOTO NO. NZ-7P 23-29, 68-74 & 106-112



Revised: 03-02-20  
1S 32A