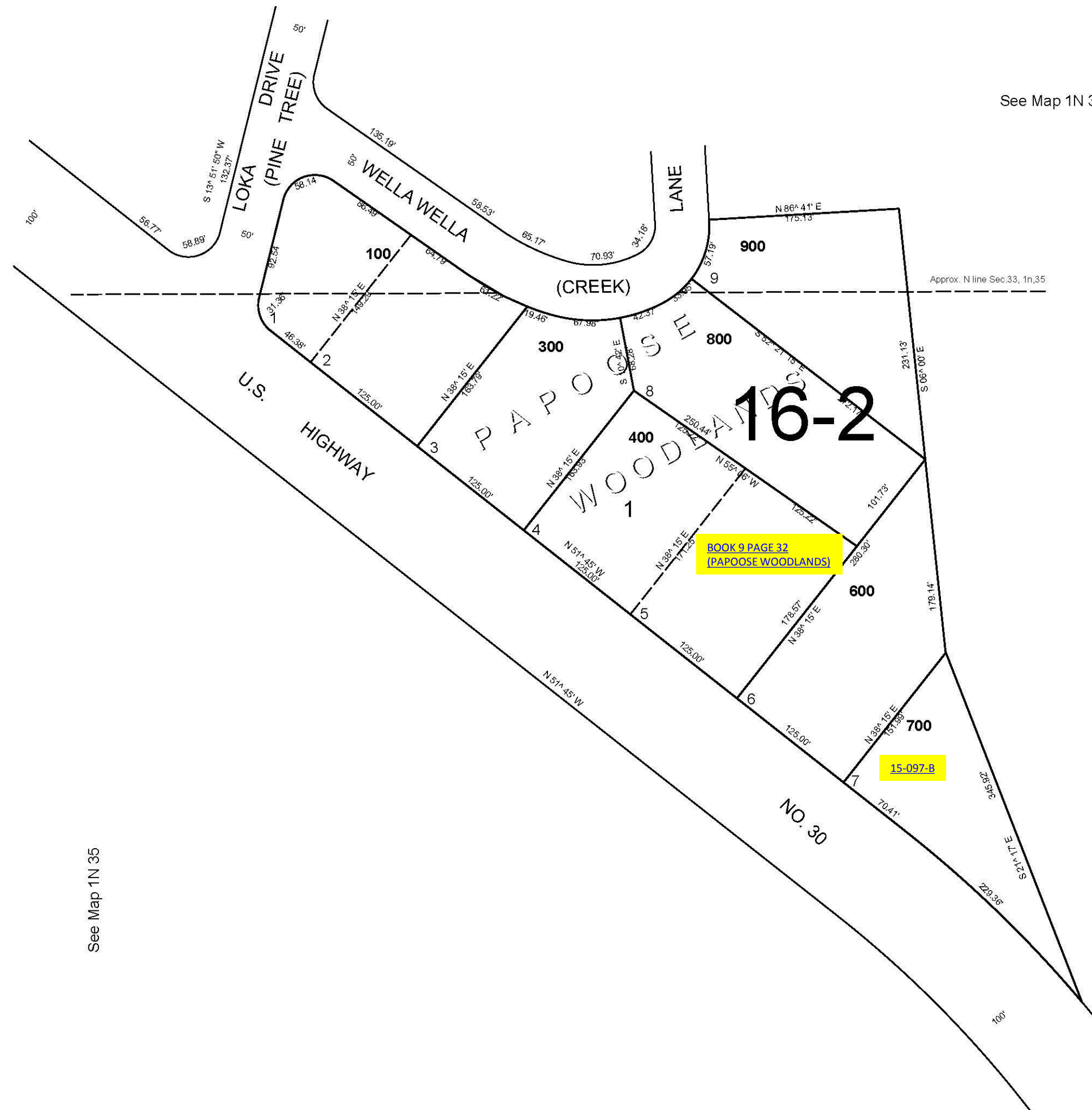


This map was prepared for assessment purposes

NE1/4 NE1/4 SEC 33 T1N R35E WM
UMATILLA COUNTY
SCALE 1"=100'

8/13/07

1N 35 33AA
AERIAL PHOTO NO. 3P-153



CANCELLED
TL 500

See Map 1N 35

See Map 1N 35

See Map 1N 35

1N 35 33AA