

This map was prepared Assessment & Taxation purposes only and was NOT prepared nor is it suitable for legal, engineering or surveying purposes.

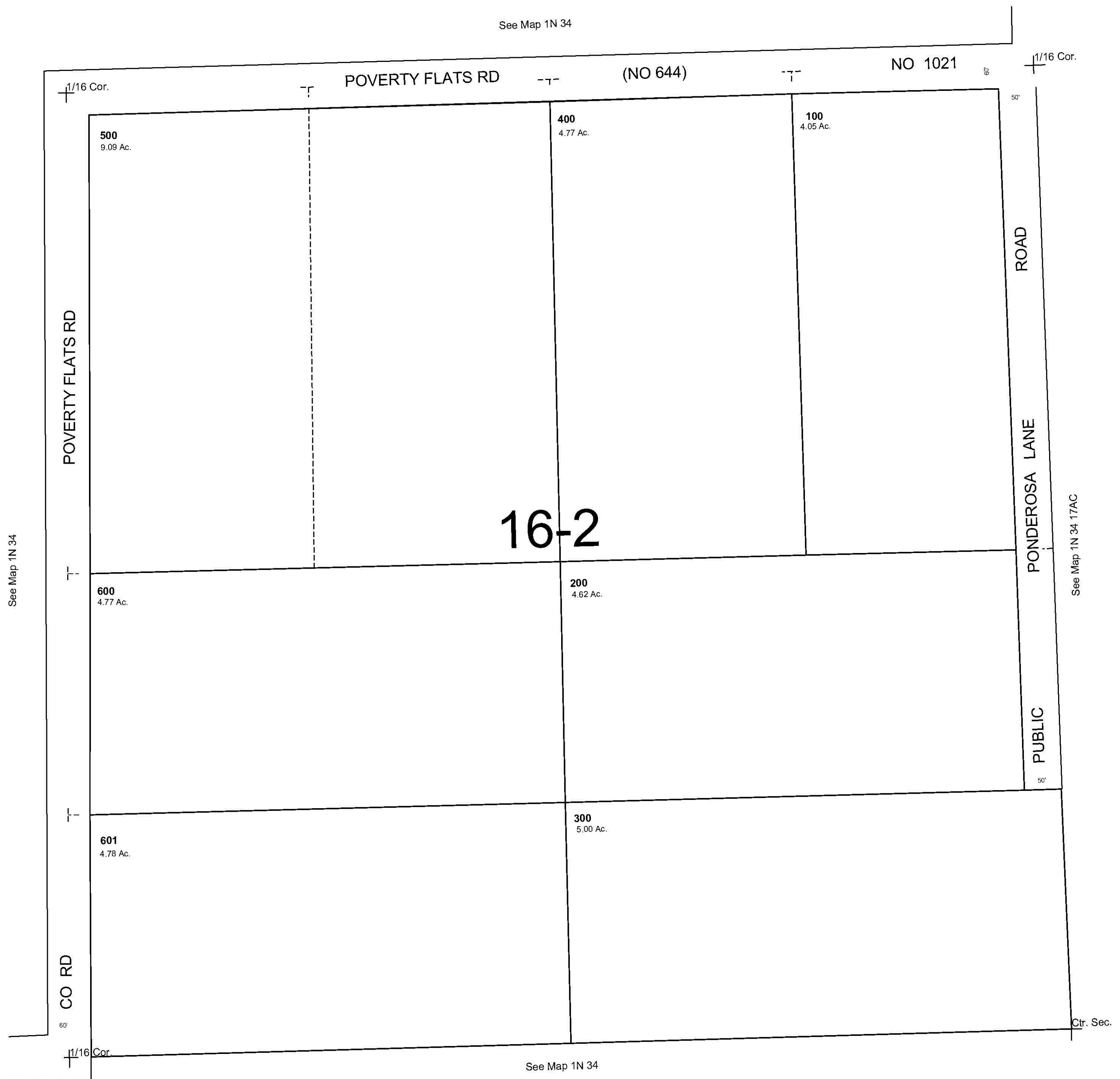
SE1/4 NW1/4 SEC 17 T1N R34E WM
UMATILLA COUNTY

SCALE 1"=100'

1N 34 17BD

AERIAL PHOTO NO. 3P-173

See Map 1N 34



Revised: 8/13/09

1N 34 17BD