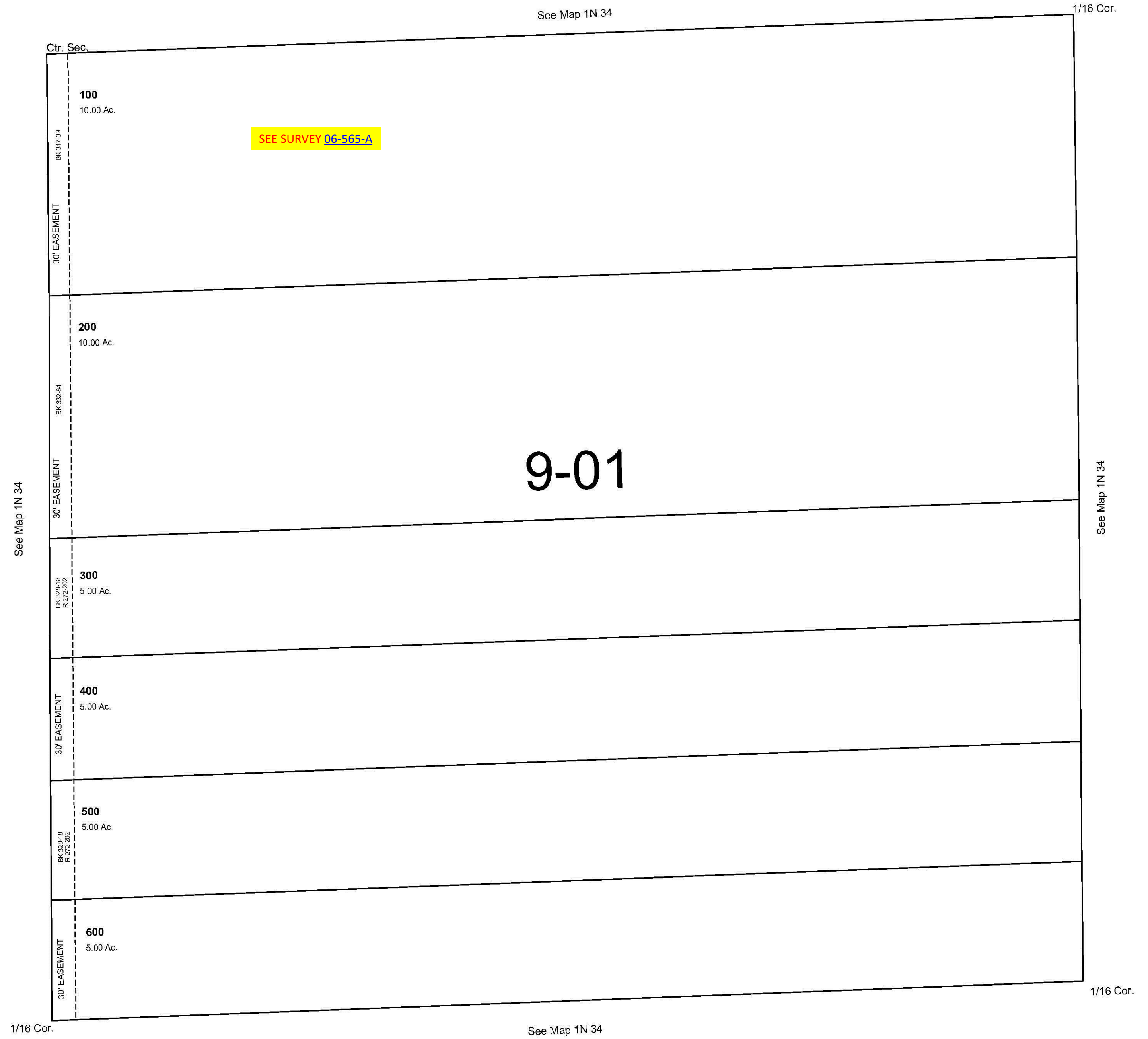


This map was prepared for Assessment & Taxation purposes only and was NOT prepared nor is it suitable for legal, engineering or surveying purposes.

NW1/4 SE1/4 SEC 10 T1N R34E WM  
UMATILLA COUNTY

1N 34 10DB

SCALE 1"=100'



Revised: 10-21-09

1N 34 10DB