

ALSO SEE SURVEYS 01-087-B, 10-158-B, 13-521-B, 04-180-C, 06-207-C, 06-381-B, 06-565-A, 06-609-AX, 88-010-B, 91-042-AX, 93-010-C, 95-169-B, 95-205-B, 96-113-C, 95-016-C, 97-217-B; CORNER RECORDS; G.L.O. SURVEYS; REDFIELD SURVEYS

This map was prepared for Assessment & Taxation purposes only and was NOT prepared nor is it suitable for legal, engineering or surveying purposes.

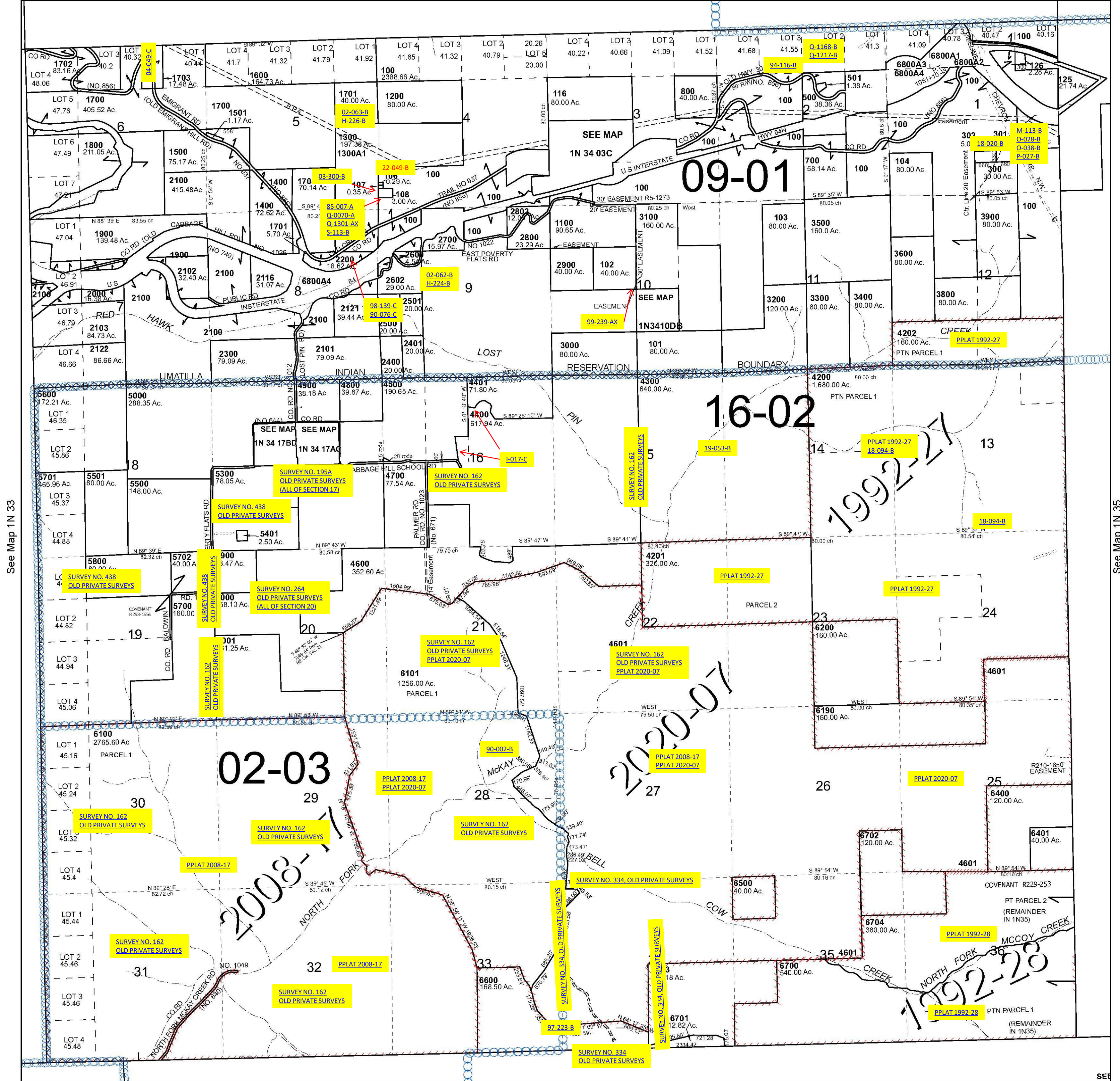
Cancelled Tax Lots			
103	900	1301	2124
105	901	1401	2201
109-115	990	1705	2601
117	991	1706	2701
119-124	1000	1801-1803	2801
127-129	1001	1901-1904	2802
131	1090	2001	3700
200	1091	2104-2115	4000
400	1101	2117-2121	4100
600	1102	2123	4301

T1N R34E WM UMATILLA COUNTY

SCALE 1" = 2,000'

1N 34

See Map 2N 34



See Map 1N 33

See Map 1N 35

Revised 7/29/2024

See Map 1S 34

1N 34