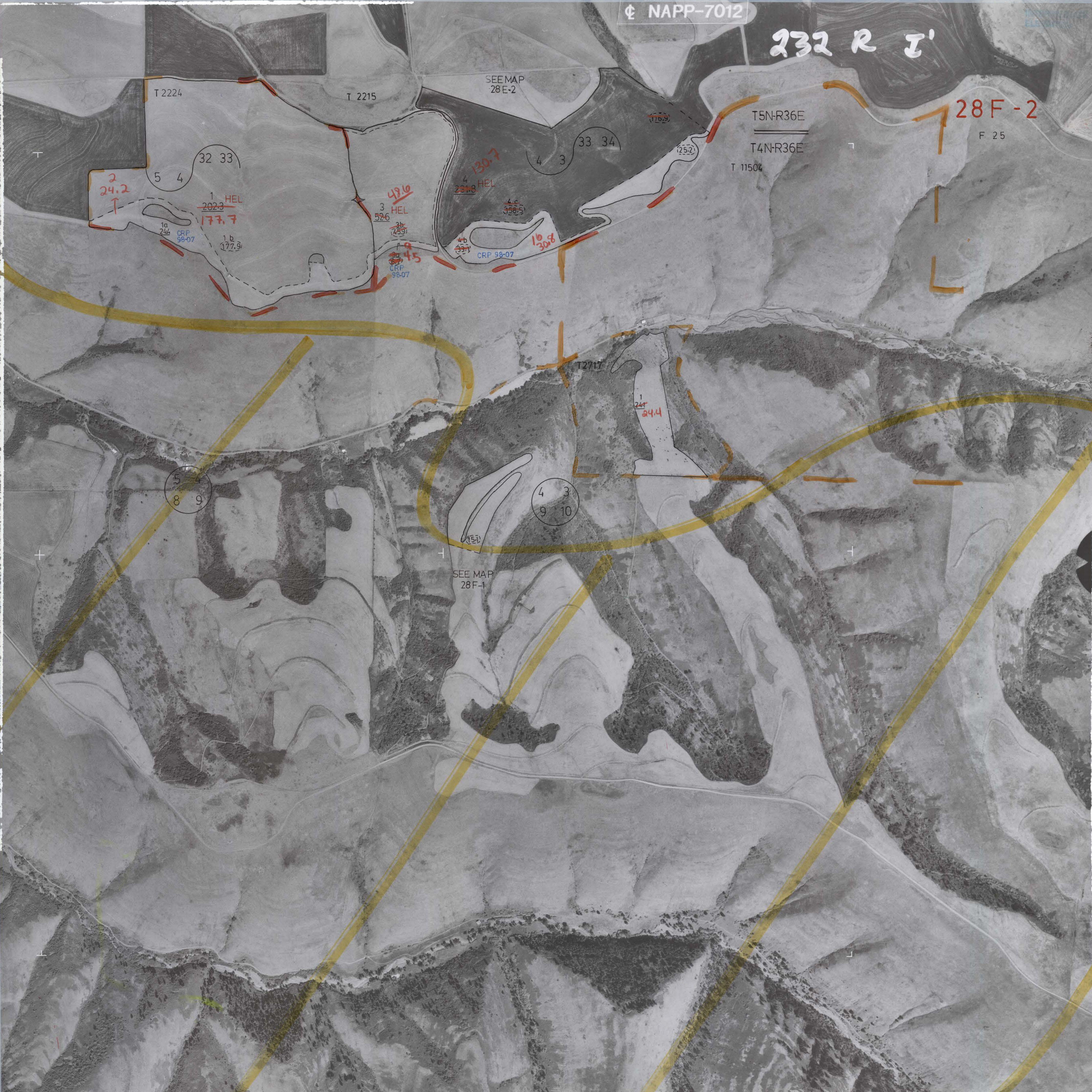


232 R I'



T 2224

T 2215

SEE MAP
28E-2

T5N-R36E

28F-2

F 25

T4N-R36E

T 11504

32 33

33 34

2
24.2
↑

5 4

1 HEL
202.3
177.7

49.0
3 HEL
52.6

130.7
4 HEL
281.8

4 3

4.6
358.5

10
30.8

CRP 98-07

1a
244
CRP 98-07

1b
177.9

3b
145.9

3c
174.5
CRP 98-07

T2717

1
24.4
24.4

5
8 9

4 3
9 10

SEE MAP
28F-1