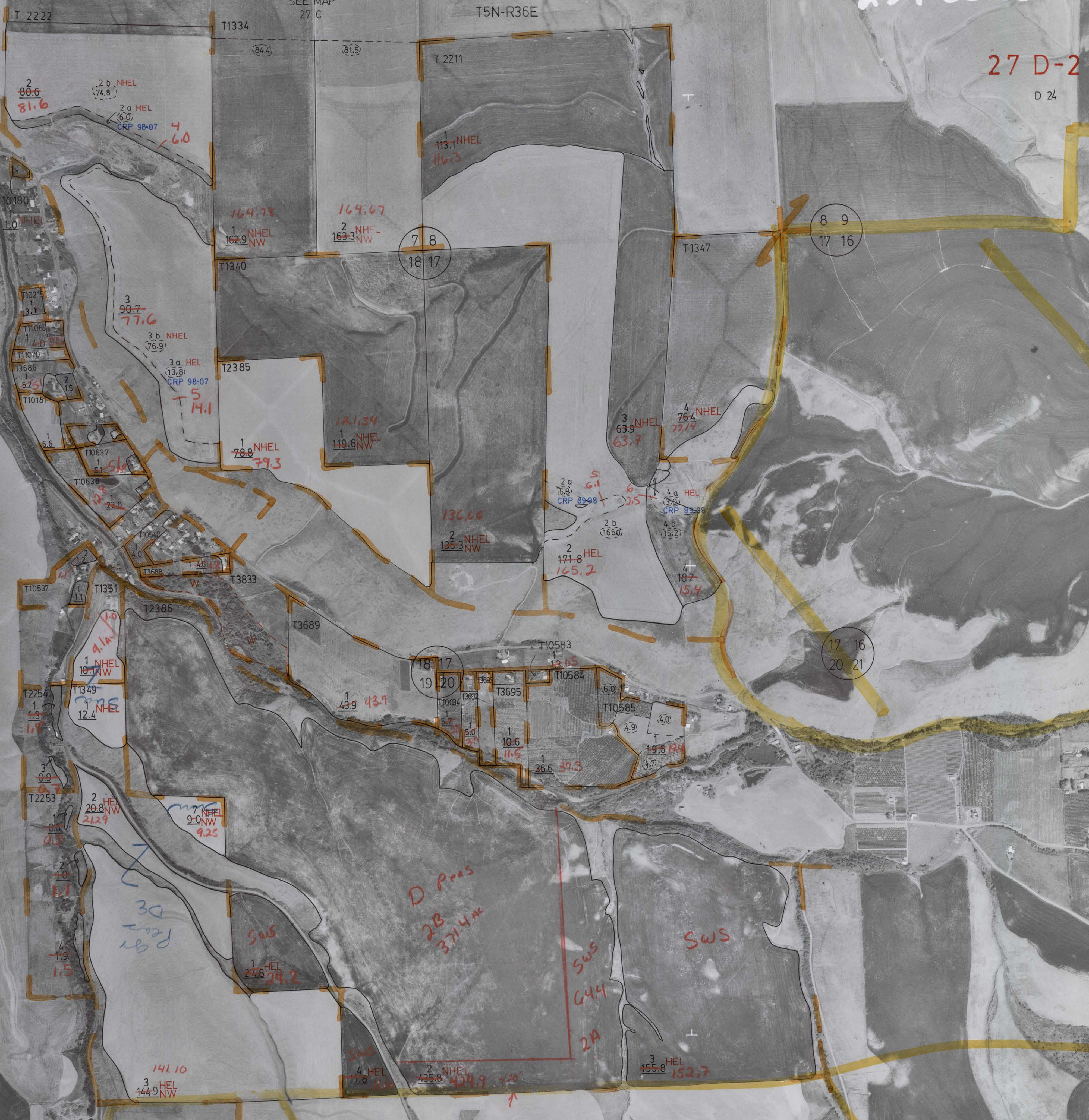


234 EC 60

SEE MAP 27 C

T5N-R36E

27 D-2
D 24



2 80.6
81.6
2 b NHEL 74.8
2 a HEL 6.0
CRP 98-07
4 6.0

7 8
18 17

8 9
17 16

18 17
19 20

17 16
20 21

1 NHEL 10.1
10.1
1.3
1.7
1.8
1.9
1.5

2 HEL 20.8
21.9
9.0 NW
9.25

D Prus
2B
371.4 ac

SWS
1 HEL 24.2

SWS
64.4
2A

SWS

3 HEL 144.9
141.10

4 HEL 11.6
2 NHEL 435.8
434.9

3 HEL 155.8
152.7

199.4

30
D Prus
Per
gr

↑