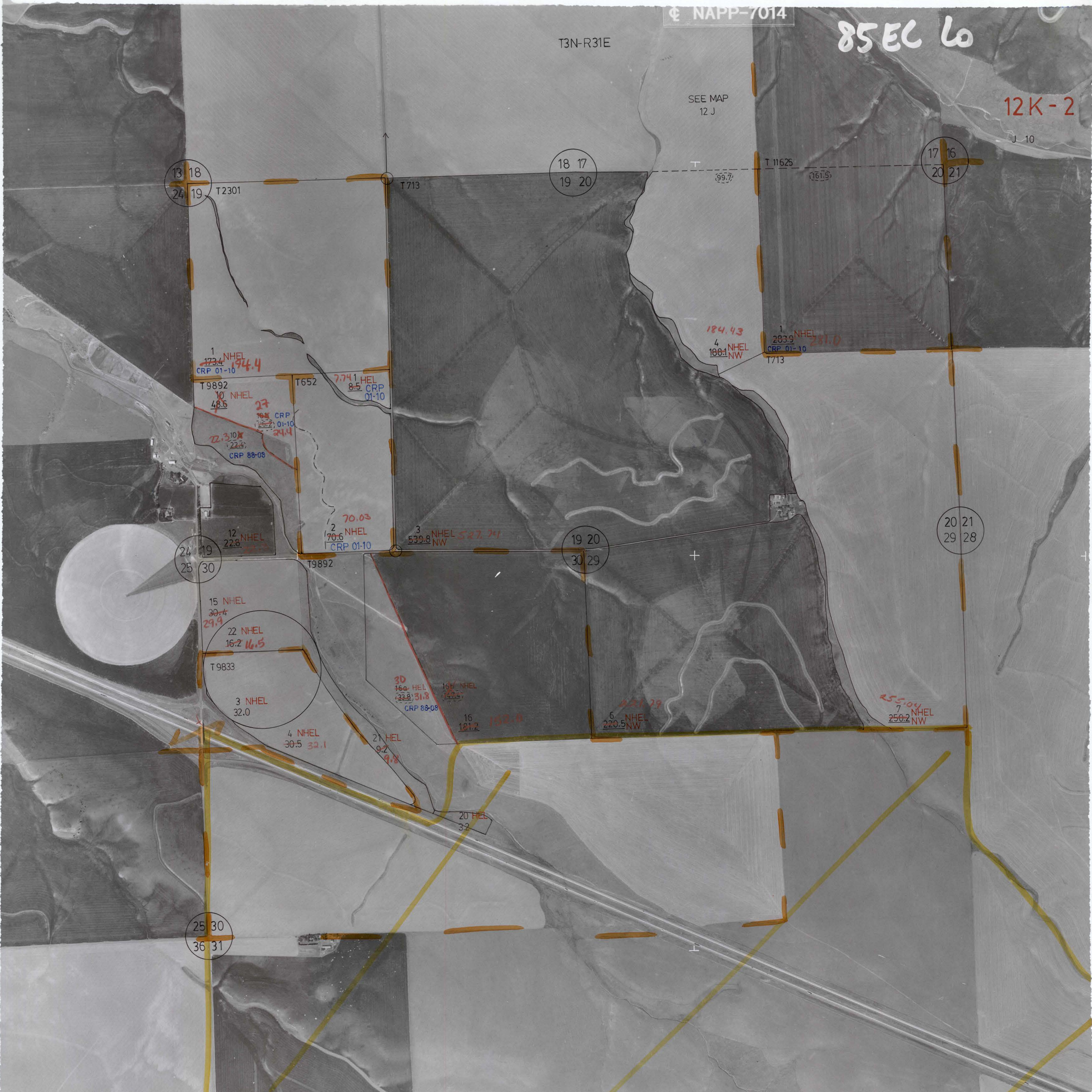


SEE MAP
12 J



13 18
24 19

18 17
19 20

17 16
20 21

T2301

T713

T 11625

1 NHEL
173.4
CRP 01-10

T9892
10 NHEL
48.6

T652

7.741 HEL
8.5 CRP
01-10

10 NHEL
22.4
CRP 88-08

27
104 CRP
01-10

70.03
2 NHEL
70.6
CRP 01-10

3 NHEL
527.24
539.8 NW

184.43
4 NHEL
188.1 NW

1 NHEL
283.9
CRP 01-10
1713

24 19
25 30

19 20
30 29

20 21
29 28

15 NHEL
30.4
29.9

22 NHEL
16.2
16.5

T9833

3 NHEL
32.0

30 HEL
164 HEL
33.8
31.8
CRP 88-08

16 NHEL
181.2
152.0

4 NHEL
30.5
32.1

21 HEL
9.2
9.8

6 NHEL
220.5 NW

7 NHEL
250.2 NW

25 30
36 31

20 HEL
3.2