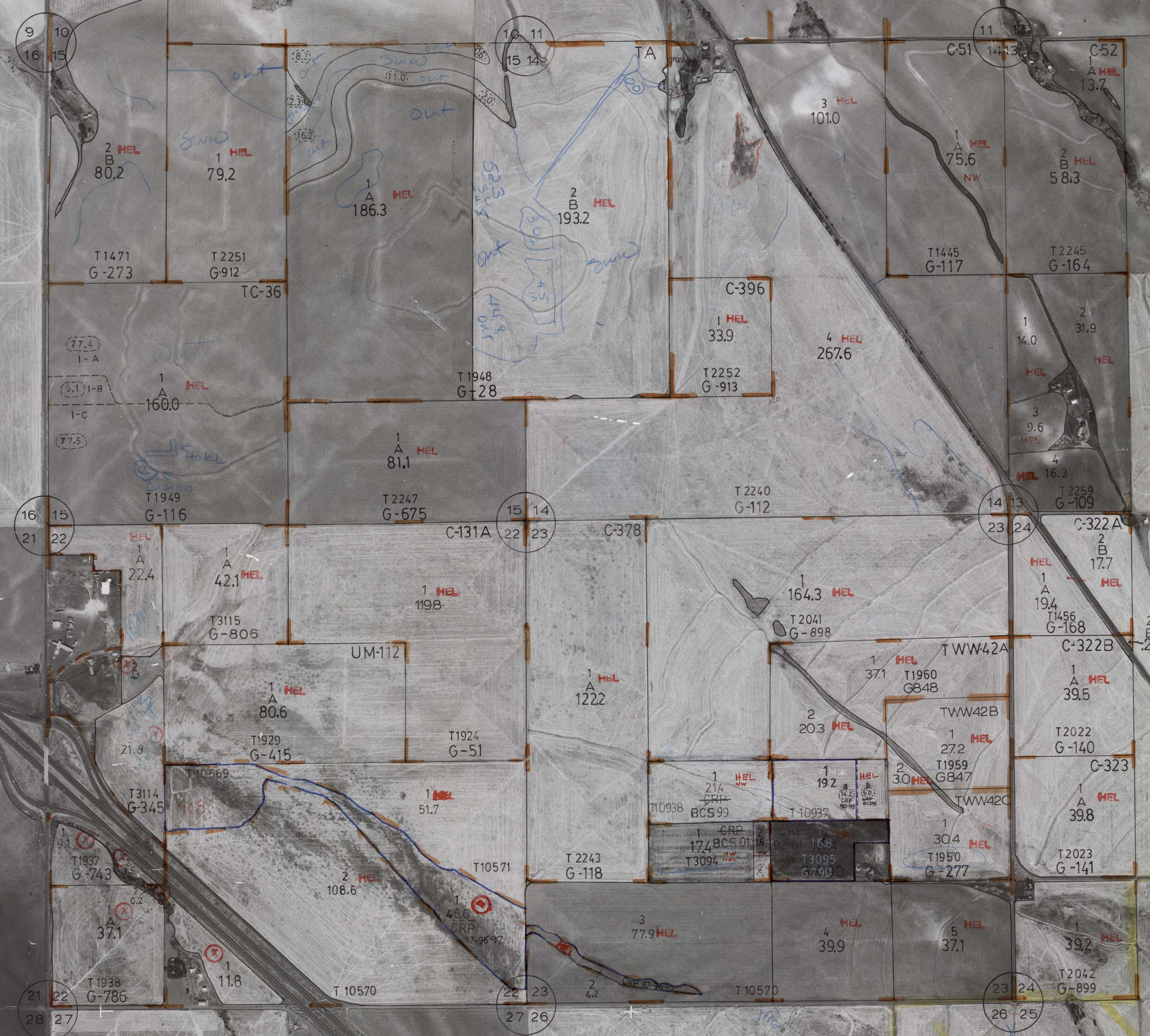


R 40
M 17
2M136
2M140
2M142

41059-378

55

T2N-R33E



9 10
16 15

10 11
15 14

11 12
14 13

16 15
21 22

15 14
22 23

14 13
23 24

21 22
28 27

22 23
27 26

23 24
26 25

2 B HEL
80.2

1 HEL
79.2

1 A HEL
186.3

2 B HEL
193.2

3 HEL
101.0

1 A HEL
75.6

2 B HEL
58.3

77.4
1-A

5.1 I-B
1-C
77.5

1 A HEL
160.0

1 A HEL
81.1

1 HEL
33.9

4 HEL
267.6

1 HEL
14.0

2 HEL
31.9

3 HEL
9.6

4 HEL
16.3

1 A HEL
22.4

1 A HEL
42.1

1 HEL
119.8

1 HEL
164.3

1 A HEL
19.4

2 B HEL
17.2

1 A HEL
80.6

1 A HEL
122.2

1 HEL
371

1 A HEL
39.5

21.8

1 HEL
G-415

1 HEL
G-51

2 HEL
203

1 HEL
272

1 HEL
G-140

T3114
G-345

1 HEL
51.7

1 HEL
214
CRP
T10938
BCS99

1 HEL
192
T10937

2 HEL
30

1 HEL
39.8

T1937
G-743

2 HEL
108.6

1 HEL
46.6
CRP
87-96-97
T10571

1 HEL
G-118

1 CRP
174 BCS 01
T3094
NW HEL

1 HEL
168
T3095
6790

1 HEL
30.4
T1950
G-277

1 HEL
G-141

37.1

1 HEL
11.8

2 HEL
108.6

1 HEL
46.6
CRP
87-96-97
T10571

3 HEL
77.9

4 HEL
39.9

5 HEL
37.1

1 HEL
39.2

T1938
G-786

T10570

2 HEL
4.2
T10570

1 HEL
168
T3095
6790

1 HEL
168
T3095
6790

1 HEL
30.4
T1950
G-277

1 HEL
G-899

21 22
28 27

22 23
27 26

23 24
26 25