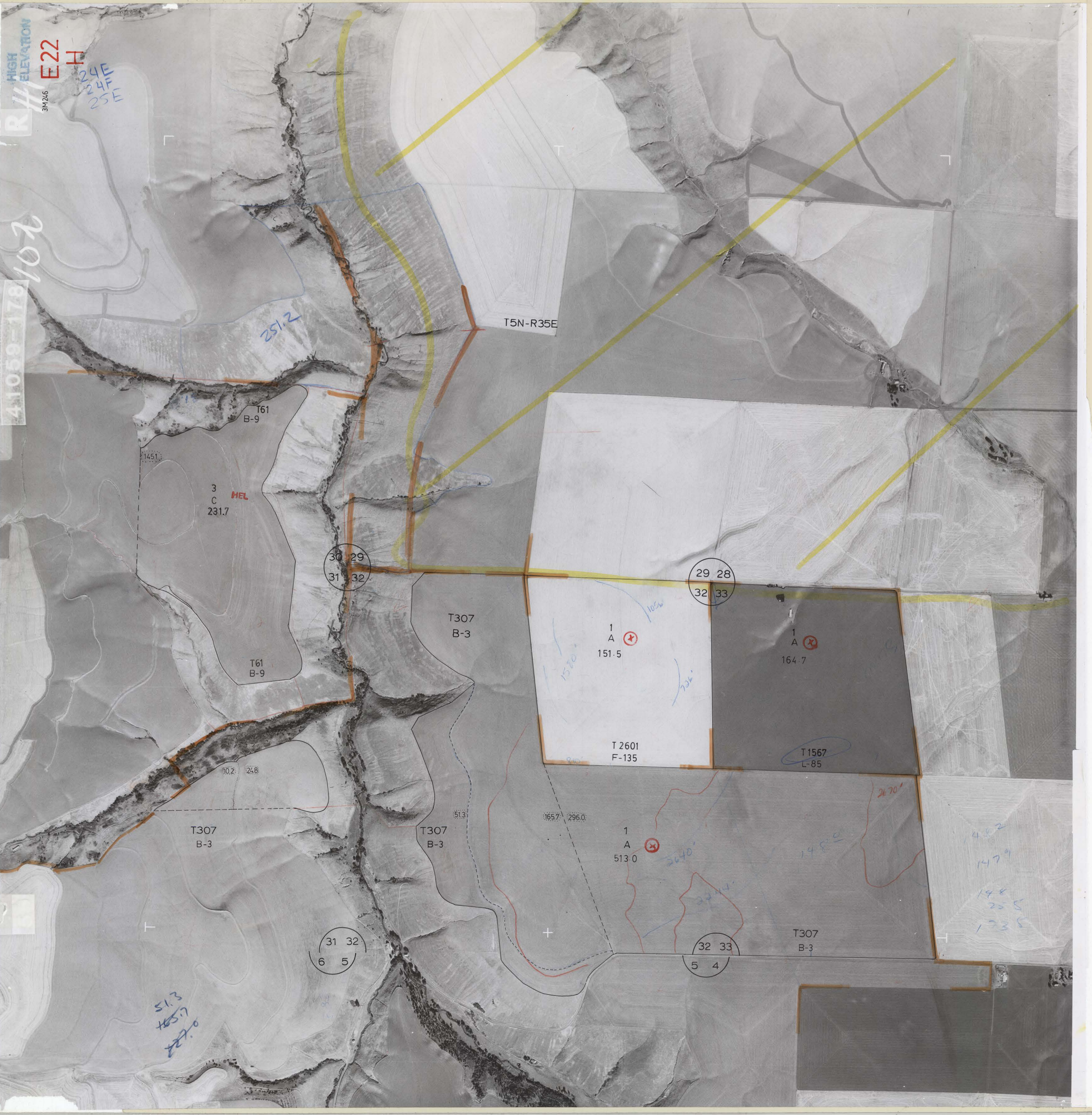


HIGH ELEVATION
E22
H
24E
24F
25E
3M26

41059-178
102



T5N-R35E

T61
B-9

3
C
HEL
231.7

30 29
31 32

T307
B-3

T61
B-9

29 28
32 33

1
A
151.5

1
A
164.7

T 2601
F-135

T1567
L-85

T307
B-3

T307
B-3

1
A
513.0

31 32
6 5

32 33
5 4

T307
B-3

51.3
159.7
22.0

145.2
147.9
148.8
25.5
123.5