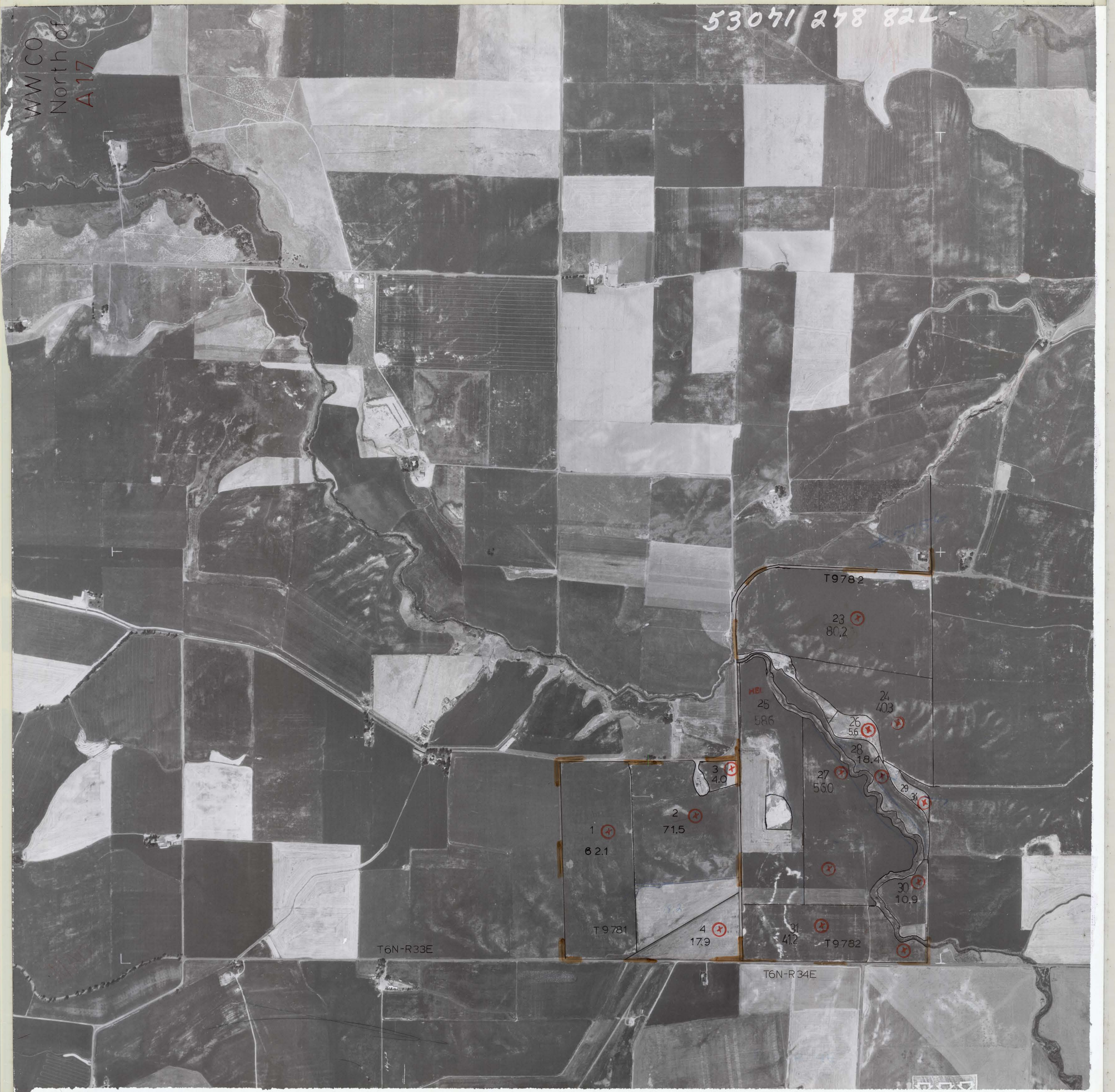


53071 278 82L

WW CO
North of
A17



T9782

23
80.2

24
403

26
56

28
18.4

27
560

29
34

1
62.1

2
71.5

3
4.0

4
17.9

5
41.2

6
586

7
18.4

8
56

9
403

10
10.9

11
560

T9781

T9782

T6N-R33E

T6N-R34E