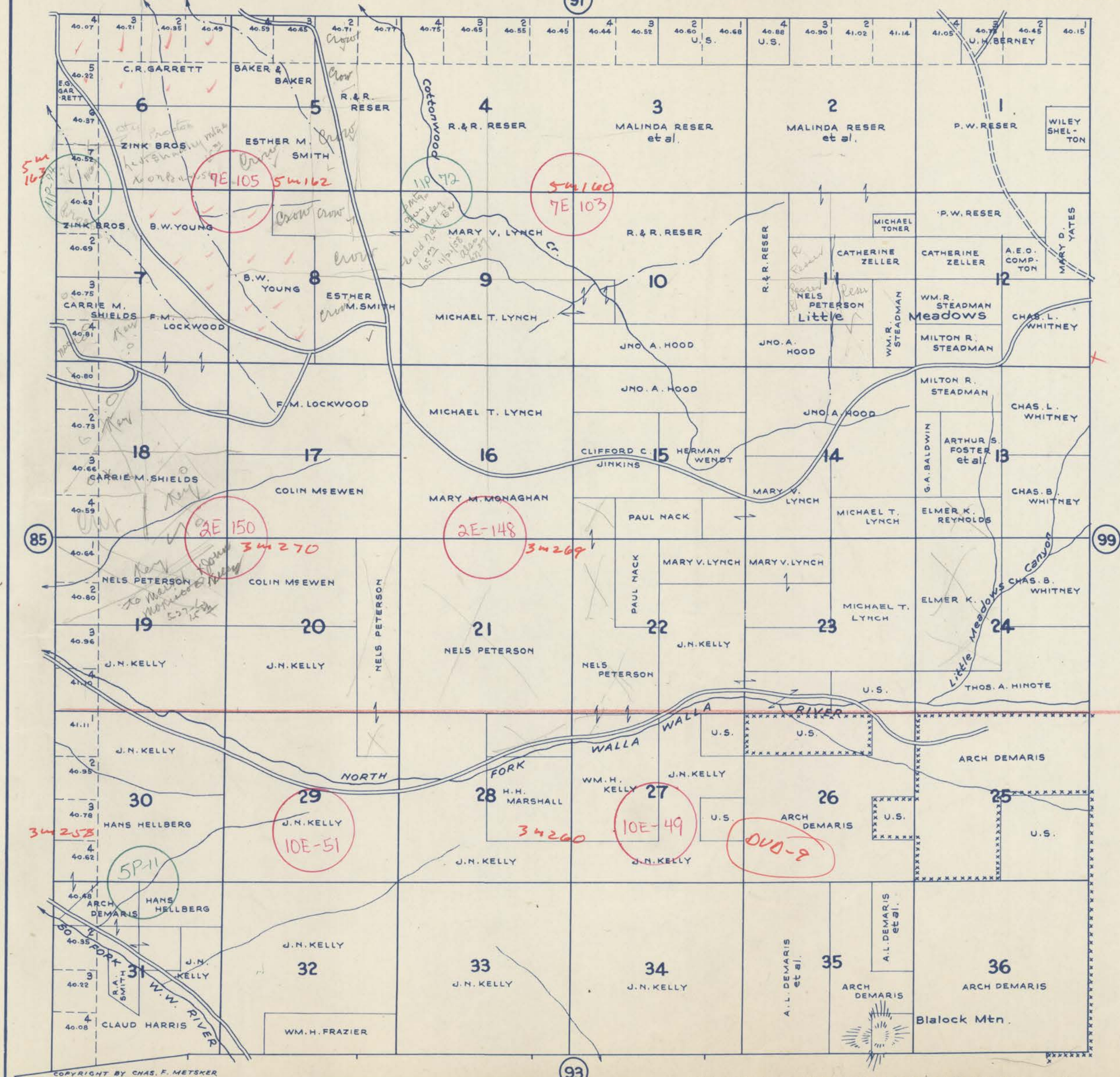


TOWNSHIP 5 N., RANGE 37 E.W.M. UMATILLA COUNTY OREGON

SCALE 2 IN. = 1 MILE
DATED 1932

CHAS. F. METSKER CIVIL ENGINEER
215 COMMERCE BLDG. PORTLAND, ORE.
930 1/2 PACIFIC AVE. TACOMA, WASH.

91



-LEGEND-

- PAVED ROADS
- STATE HIGHWAYS
- MARKET ROADS
- DIRT ROADS
- INFERIOR ROADS
- RAILROADS
- TRAILS
- INTERMITTENT CREEKS
- SCHOOLS

COPYRIGHT BY CHAS. F. METSKER

NOTE - AREAS ENCLOSED BY CROSSES ARE PART OF UMATILLA NATL. FOREST.

93