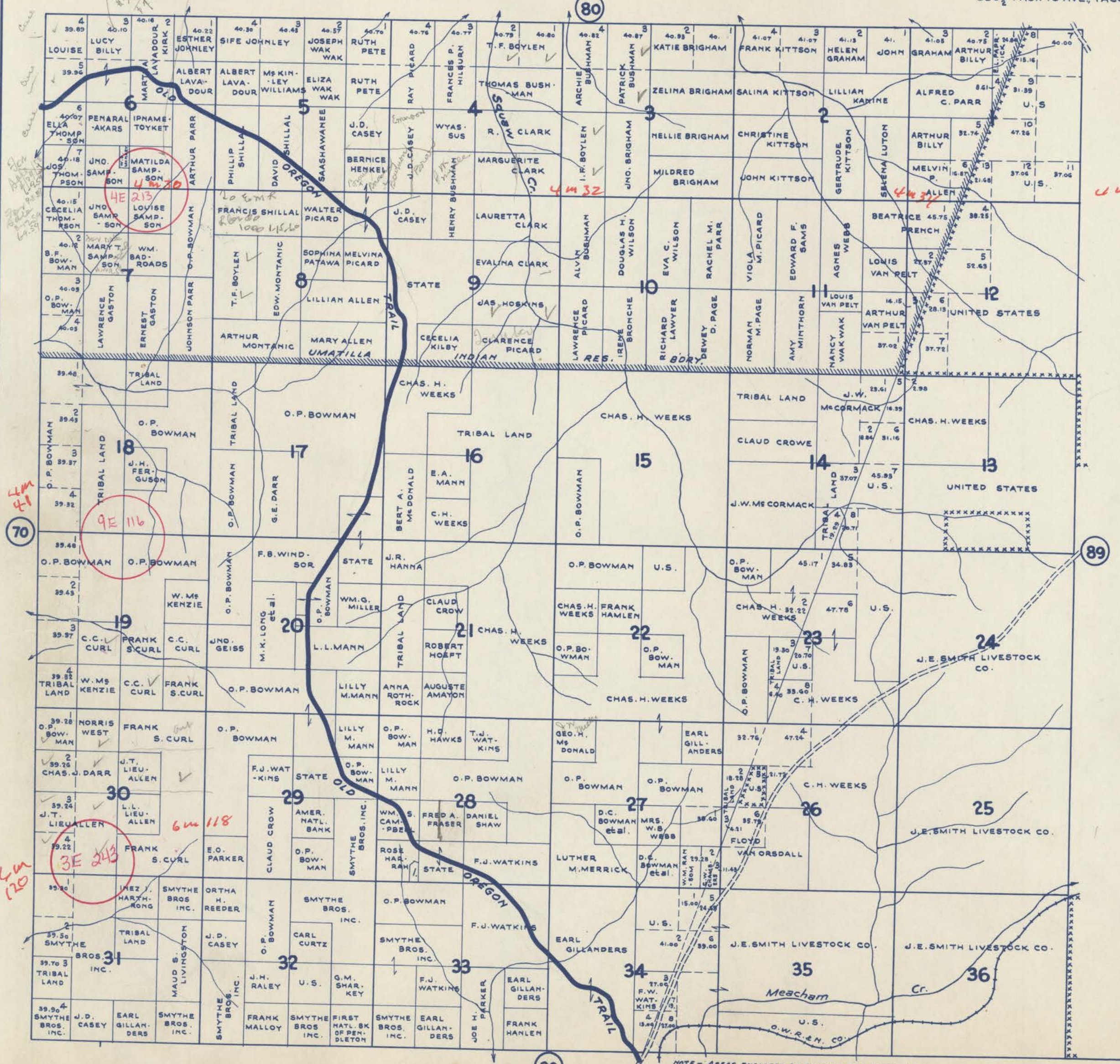


# TOWNSHIP 1 N., RANGE 35 E.W.M. UMATILLA COUNTY OREGON

SCALE 2 IN. = 1 MILE.  
DATED 1932

CHAS. F. METSKER, CIVIL ENGINEER  
215 COMMERCE BLDG., PORTLAND, ORE.  
930 1/2 PACIFIC AVE., TACOMA, WASH.

1 - FIRST NATL. BANK OF PENDLETON



4432

70

9E 116

4436

3E 243

6118

82

89

4436

NOTE - AREAS ENCLOSED BY CROSSES ARE PARTS OF UMATILLA NATIONAL FOREST.

**- LEGEND -**

- PAVED ROADS
- STATE HIGHWAYS
- MARKET ROADS
- DIRT ROADS
- INFERIOR ROADS
- RAILROADS
- TRAILS
- INTERMITTENT CREEKS
- SCHOOLS