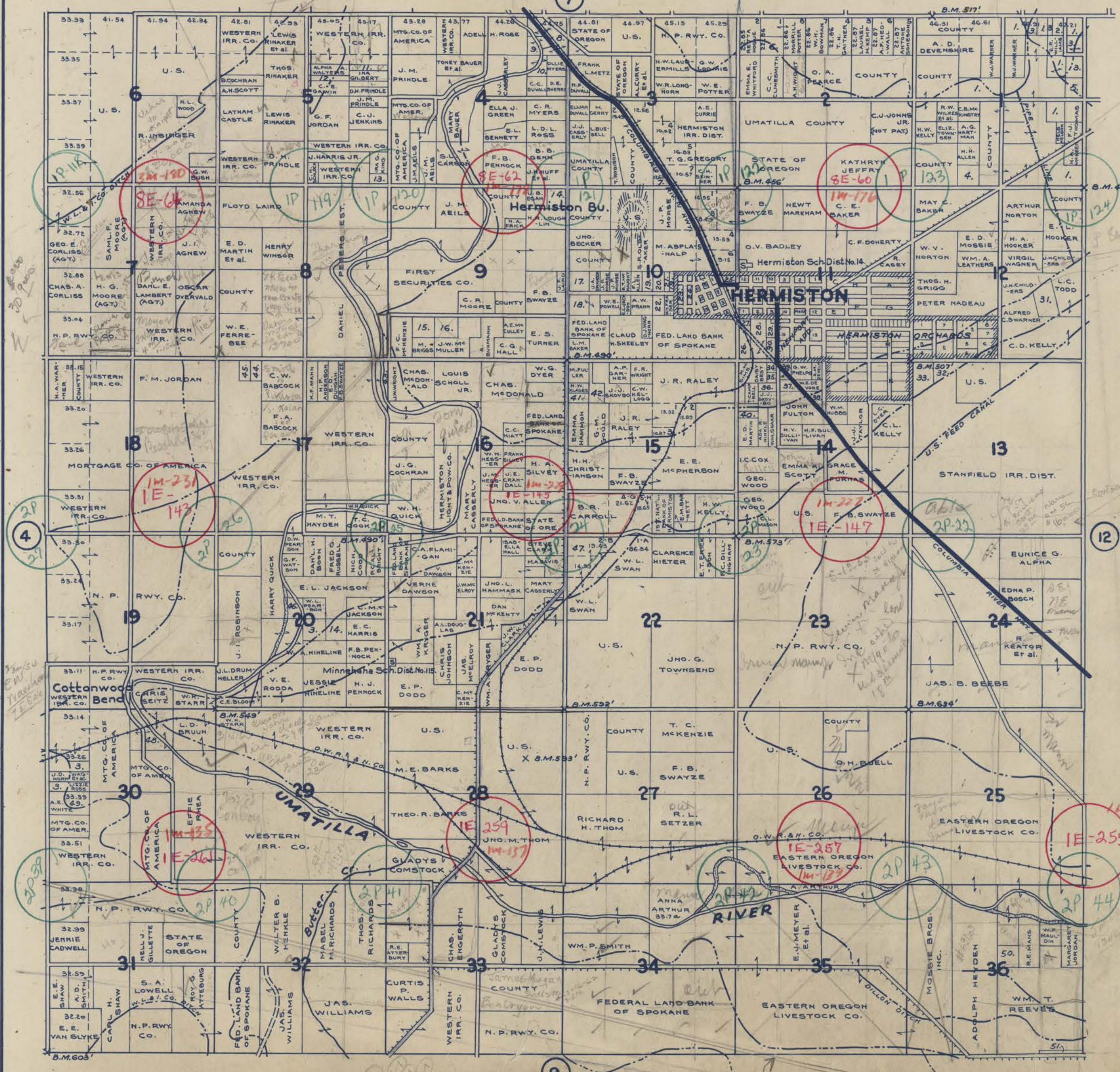


TOWNSHIP 4 N., RANGE 28 E.W.M. UMATILLA COUNTY OREGON

SCALE 2 IN. = 1 MILE
DATED 1932

CHAS. F. METSKER CIVIL ENGINEER
215 COMMERCE BLDG. PORTLAND, ORE.
930 1/2 PACIFIC AVE. TACOMA, WASH.



- 1-STANFIELD FEEDER CO.
- 2-R. G. ROSS
- 3-UMATILLA COUNTY
- 4-TUM A LUM LBR. CO.
- 5-JOHN BUNNING
- 6-N. MADDEN
- 7-ANNA M. SMITH
- 8-MINIE BENEDICT
- 9-MRS. U. BROWN
- 10-C. R. MYERS
- 11-ANNIE & E. L. TAYLOR
- 12-L. L. STEWART
- 13-C. A. PAGE
- 14-HERMISTON IRR. DIST.
- 15-INLAND EMPIRE LBR. CO.
- 16-1ST. NATL. BK. OF ALBANY, ORE.
- 17-EDNA W. HUGGLES
- 18-THOMAS CAMPBELL
- 19-H. R. LAUGHLIN
- 20-S. R. OLDAKER
- 21-STANDARD OIL CO.
- 22-SLOAN & SOUTHWARD
- 23-1ST. ADD. TO HERMISTON
- 24-2ND. ADD. TO HERMISTON
- 25-HERNS ADD. TO HERMISTON
- 26-CHAS. TAYLOR
- 27-CITY OF HERMISTON
- 28-EUGENE H. HANBY
- 29-W. J. WARNER
- 30-E. P. DODD
- 31-1ST. NATL. BK. OF HERMISTON
- 32-C. W. DYER ET AL.
- 33-LEWIS DOUGLAS ET AL.
- 34-AUG. F. BENDEL
- 35-N. M. STRAW
- 36-FRANKLIN MASON
- 37-T. L. STEWART
- 38-F. B. SWAYZE
- 39-LEWIS HIGGINS
- 40-C. E. WITTER
- 41-H. W. RATLER
- 42-RUTH T. McNAUGHT
- 43-A. W. TURNBLAD
- 44-E. A. BABCOCK
- 45-ELIZ. BLAKELEY
- 46-L. C. QUICK
- 47-FED. LD. BK. OF SPOKANE
- 48-U. L. DRUMHEALER
- 49-D. BURRELL
- 50-W. F. MAULDIN
- 51-FRANK DONNELLY

- LEGEND-**
- PAVED ROADS
 - STATE HIGHWAYS
 - MARKET ROADS
 - DIRT ROADS
 - INFERIOR ROADS
 - RAILROADS
 - TRAILS
 - INTERMITTENT CREEKS
 - SCHOOLS