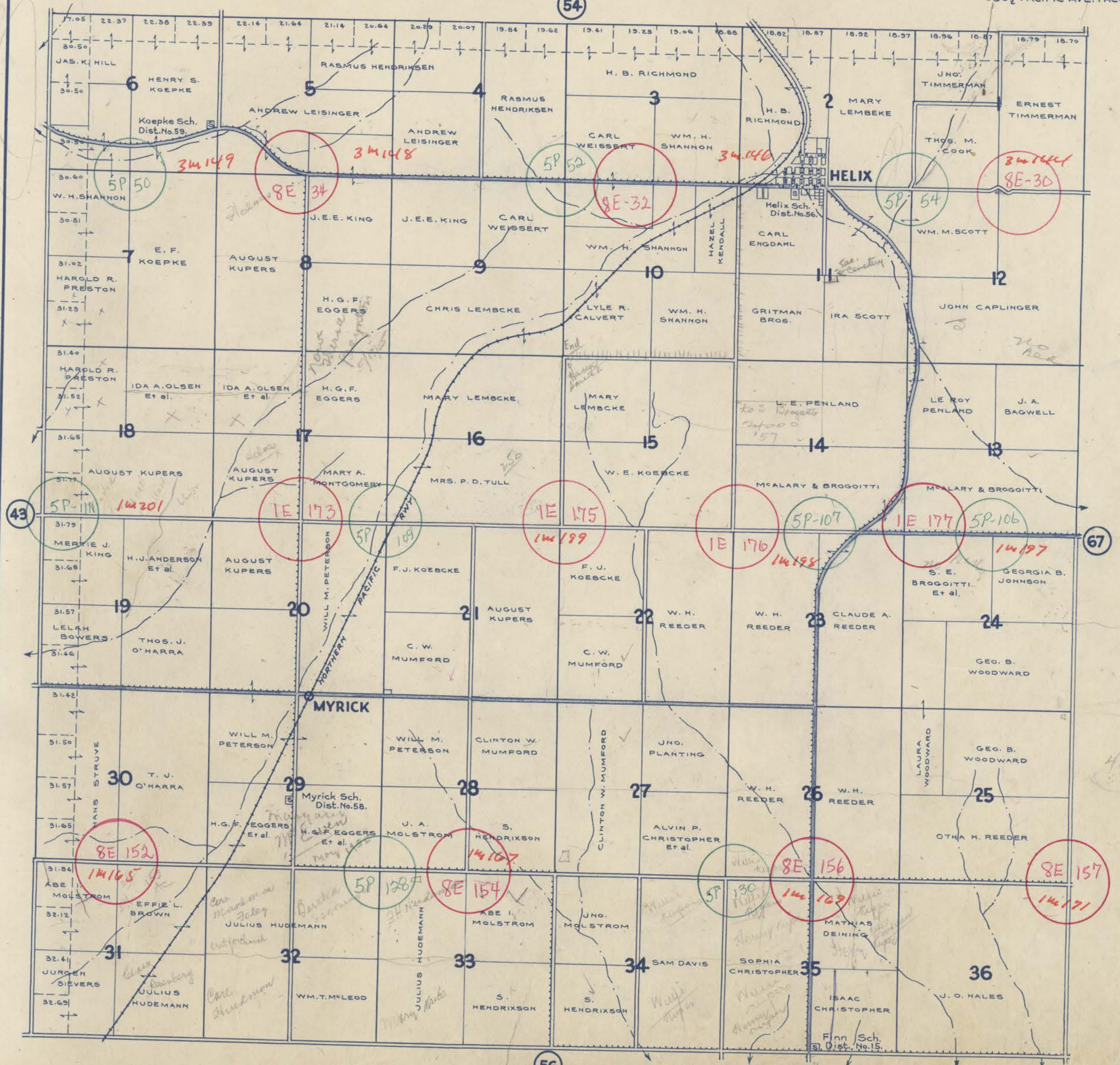


# TOWNSHIP 4 N., RANGE 33 E.W.M. UMATILLA COUNTY OREGON

SCALE 2 IN. = 1 MILE  
DATED 1932

CHAS. F. METSKER CIVIL ENGINEER  
215 COMMERCE BLDG, PORTLAND, ORE.  
930 1/2 PACIFIC AVE. TACOMA, WASH.

54



90.91  
160  
250.91

230,000

4250.00  
5250.00  
7500

- LEGEND-
- PAVED ROADS
  - STATE HIGHWAYS
  - MARKET ROADS
  - DIRT ROADS
  - INFERIOR ROADS
  - RAILROADS
  - TRAILS
  - INTERMITTENT CREEKS
  - SCHOOLS