

3M-17

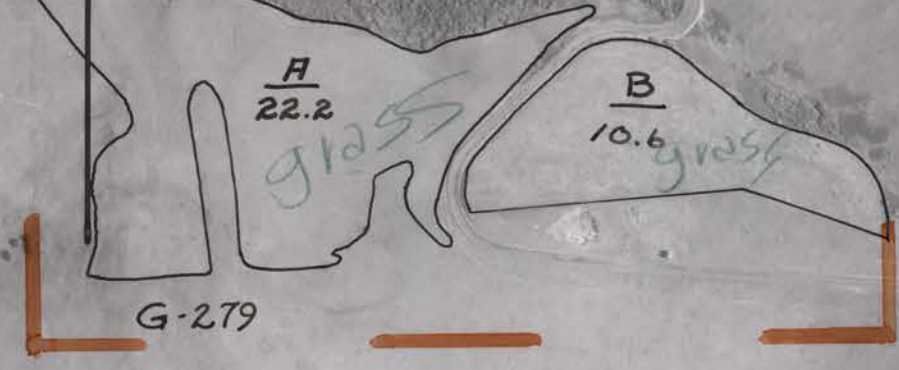
NZ-4MM-24

0-19  
4E-219

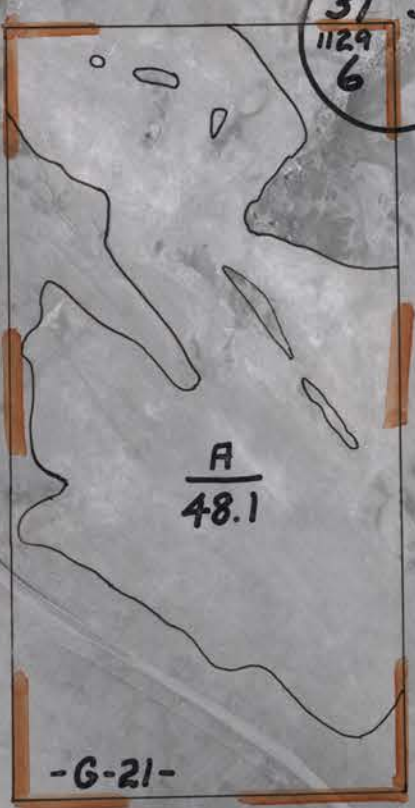
T2N-R33E  
T1N-R33E

36 31  
6

T2N-R34E  
T1N-R34E



31 32  
1129  
6 5



4M-22

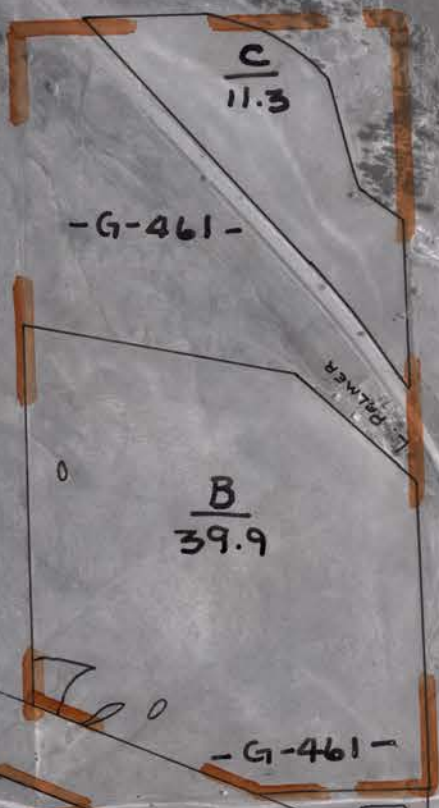
1 6  
12 7

H/W 80N

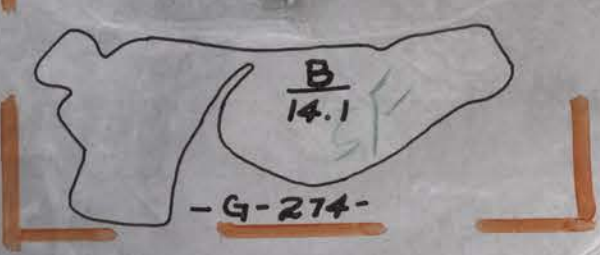
A 65.9

-G-274

6 5  
7 8



4M-26

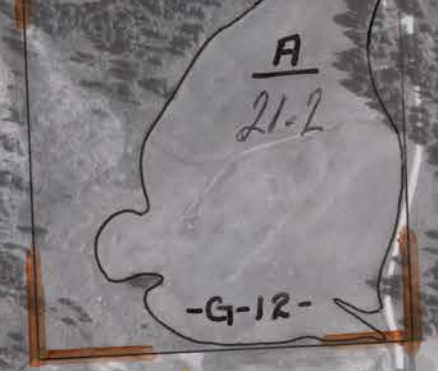


5-23-71

12 7  
13 18



7 8  
18 17



4M-47