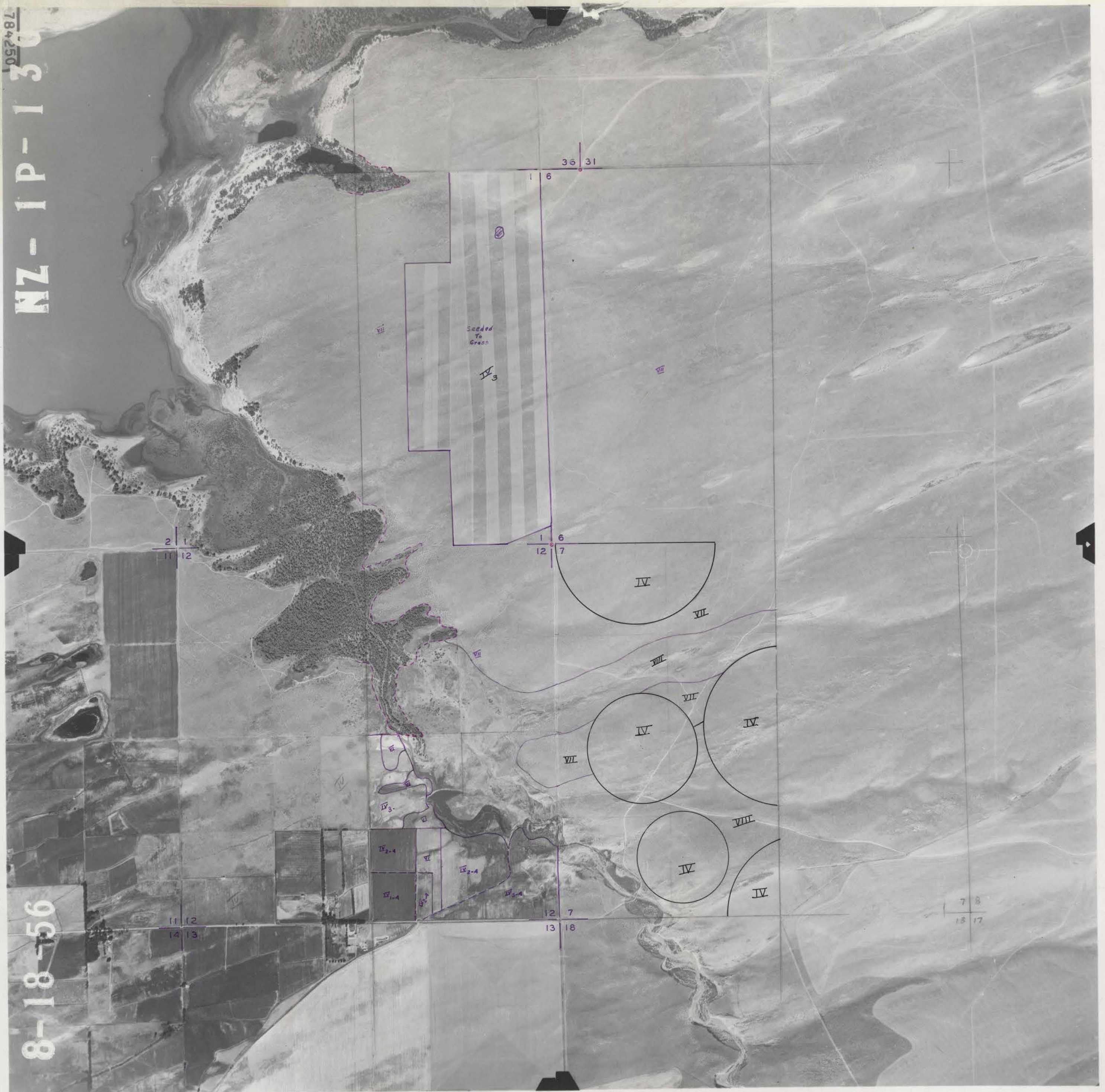


T4N.R.29E.

T4N.R.30E.

7842501
NZ-1P-130

8-18-56



2 | 1
11 | 12

36 | 31
| 6

1 | 6
12 | 7

11 | 12
14 | 13

12 | 7
13 | 18

7 | 8
18 | 17

Seeded
To
Grass

IV₃

IV

VII

IV

IV

VII

VII

IV

VIII

IV

VII

VII

VII

IV₃

IV₂₋₄

IV₂₋₄

IV₁₋₄

IV₂₋₄

IV₃₋₄