

R. 33 E.

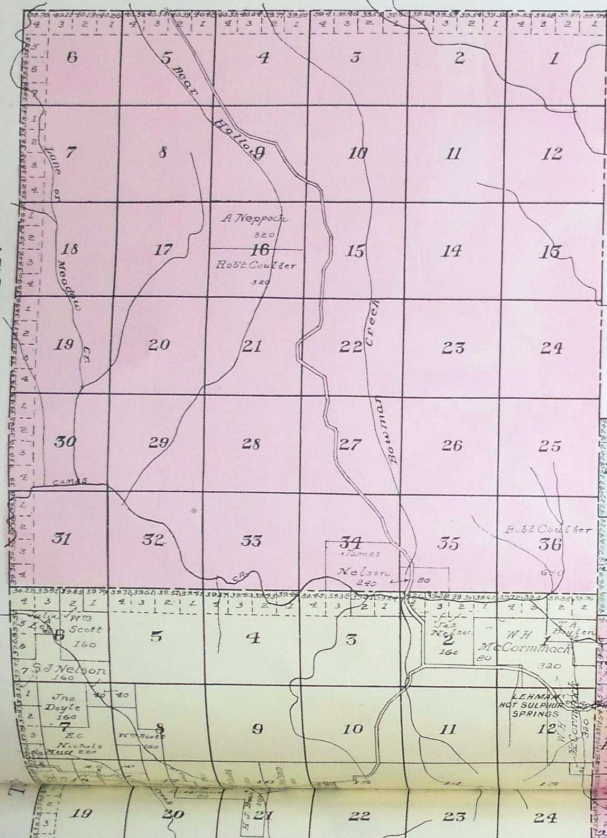
SOUTHEAST PART OF UMATILLA COUNTY

OREGON

*Twps. 4 S R 33 E, Part of Frac. Twp. 4 S R 33 1/2 E,
Part of Twp. 4 S R 34 E, Twp. 5 S R 33 E, Frac. Twp. 5
S R 33 1/2 E, Part of Twp. 5 S R 34 E, Twp. 6 S Ranges
33 & 34 E, Part of Twp. 6 S R 35 E of the Will. Mer.*

Scale: 1 1/4 inches to 1 mile.

T. 4 S.



C.O.

R. 33 1/2 E.

R. 34 E.

