

This map was prepared for Assessment & Taxation purposes only and was NOT prepared nor is it suitable for legal, engineering or surveying purposes.

SW1/4 T6N R38E WM UMATILLA COUNTY

7/27/21

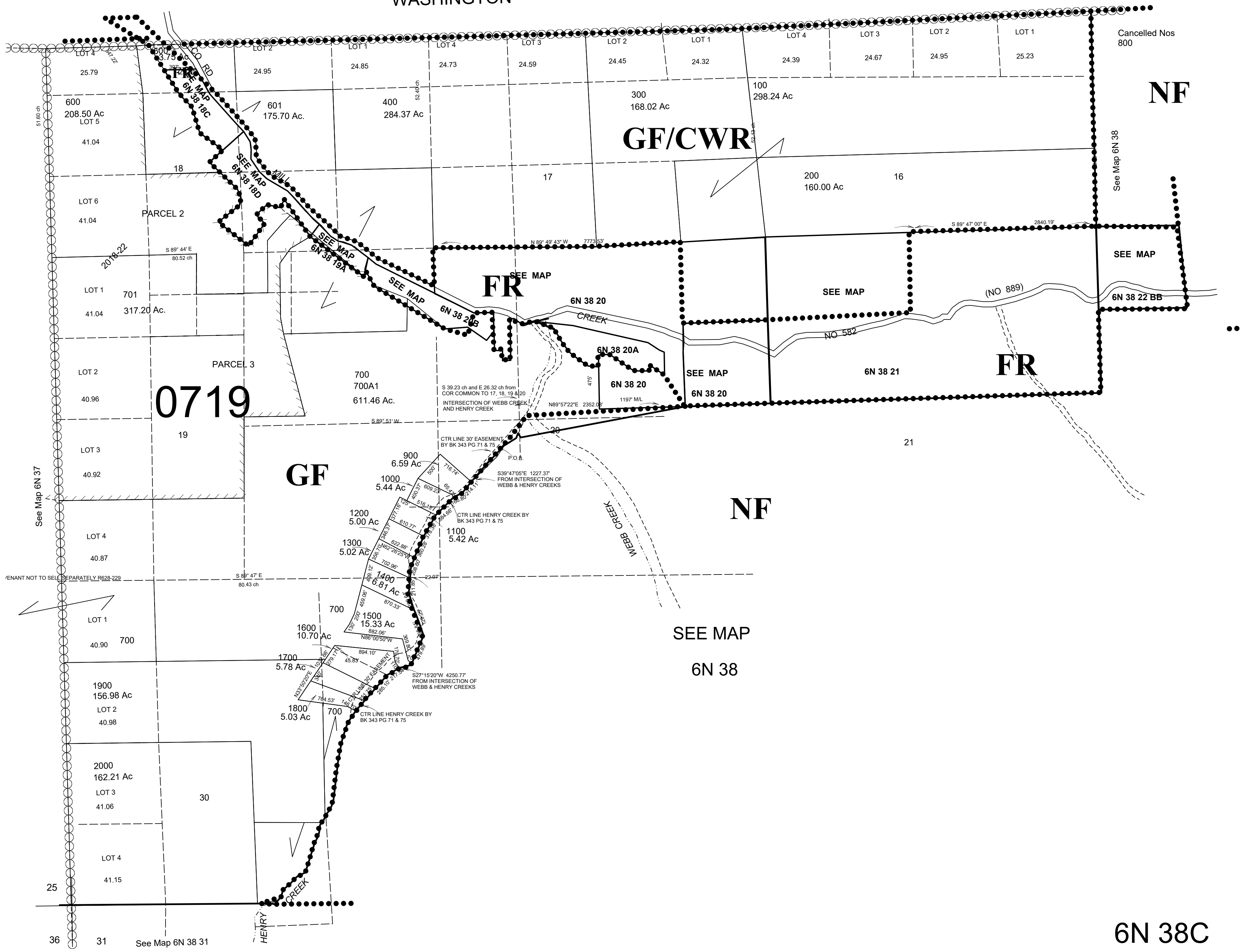
6N 38C

AERIAL PHOTO NO. NZ-6P-1-6

See FEMA FIRM for areas subject to flooding

SCALE 1"=1000'

WASHINGTON



6N 38C