

This map was prepared for Assessment & Taxation purposes only and was not prepared, nor is it suitable for legal, engineering or surveying purposes.

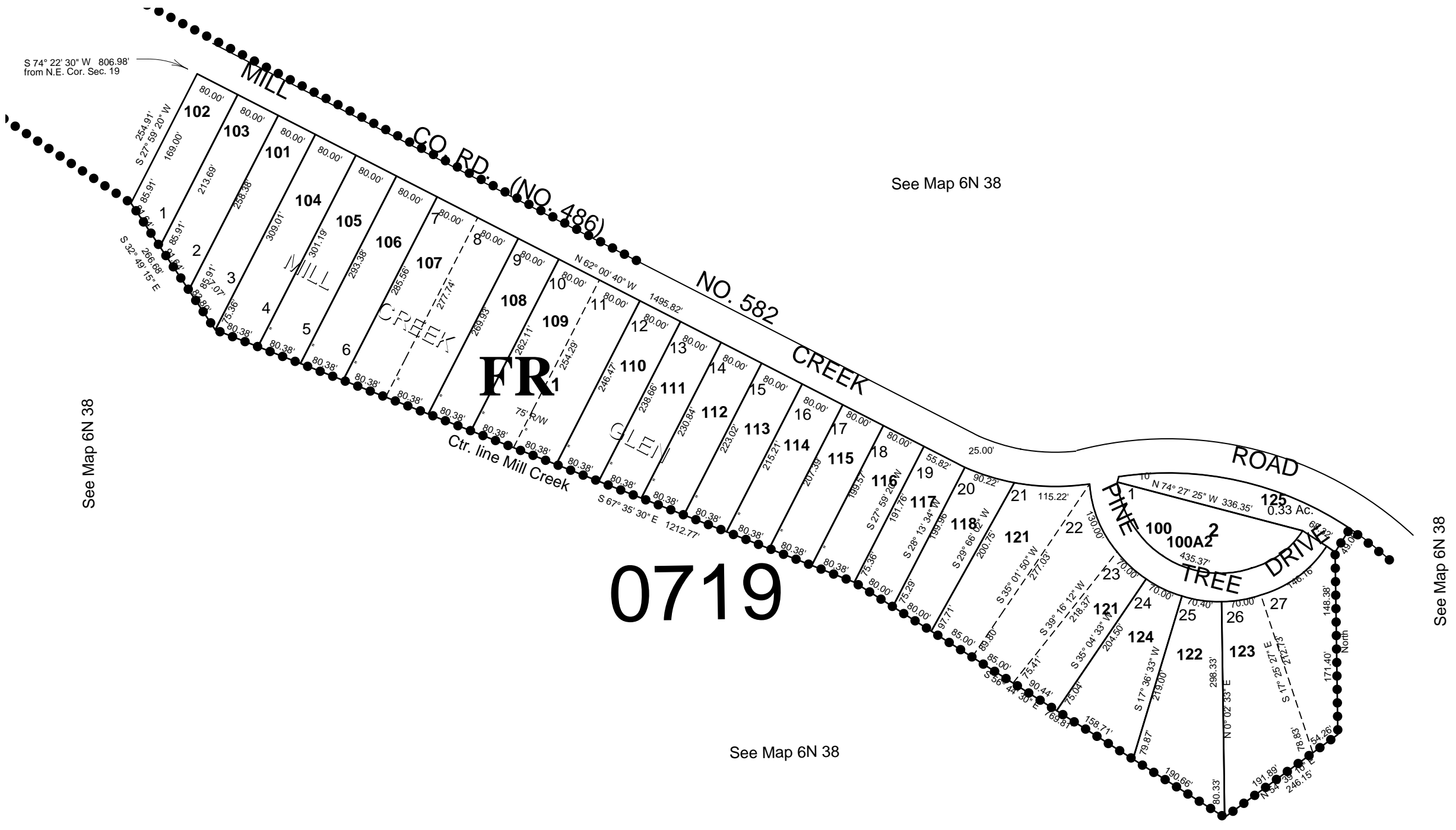
NW1/4 Sec 20 T6 N R38 E WM UMATILLA COUNTY

SCALE 1"=200'

6N3820B

Mill Creek Glen
Aerial Photo No. NZ-6P-5

See FEMA FIRM for areas subject to flooding



Cancelled Nos
119
120

Revised 4-17-09

6N3820B