

This map was prepared for assessment purposes

NW 1/4 SEC 36 T6N R36E WM  
UMATILLA COUNTY  
SCALE 1"=200'

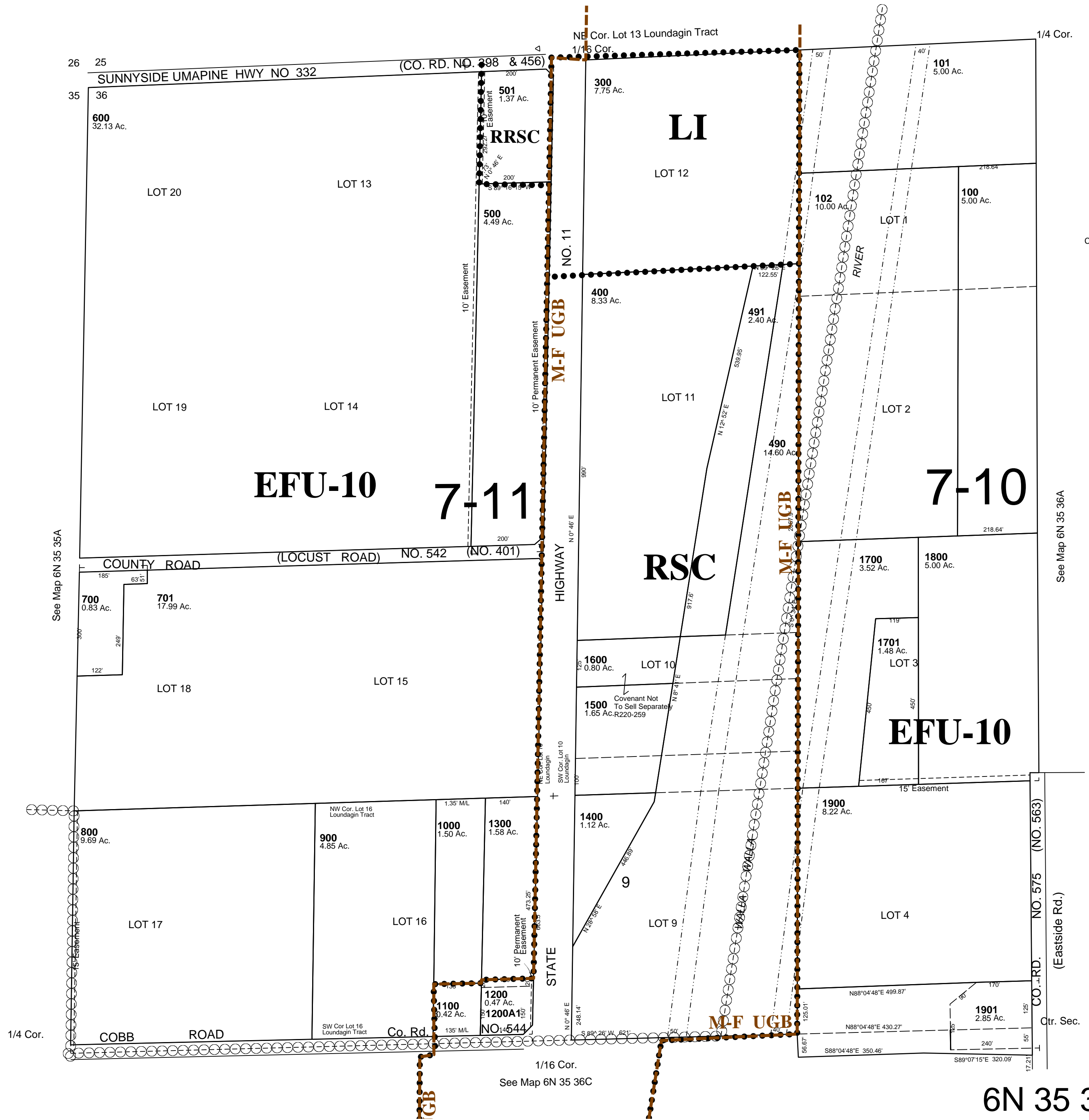
10/16/06

6N 35 36B

AERIAL PHOTO NO. 6P-64

M-F Urban Growth Area

See Map 6N 35 25C



CANCELLED  
TL 200  
1301  
502  
1201  
503  
702

See Map 6N 35 36A

See Map 6N 35 36A

See Map 6N 35 36C

6N 35 36B