

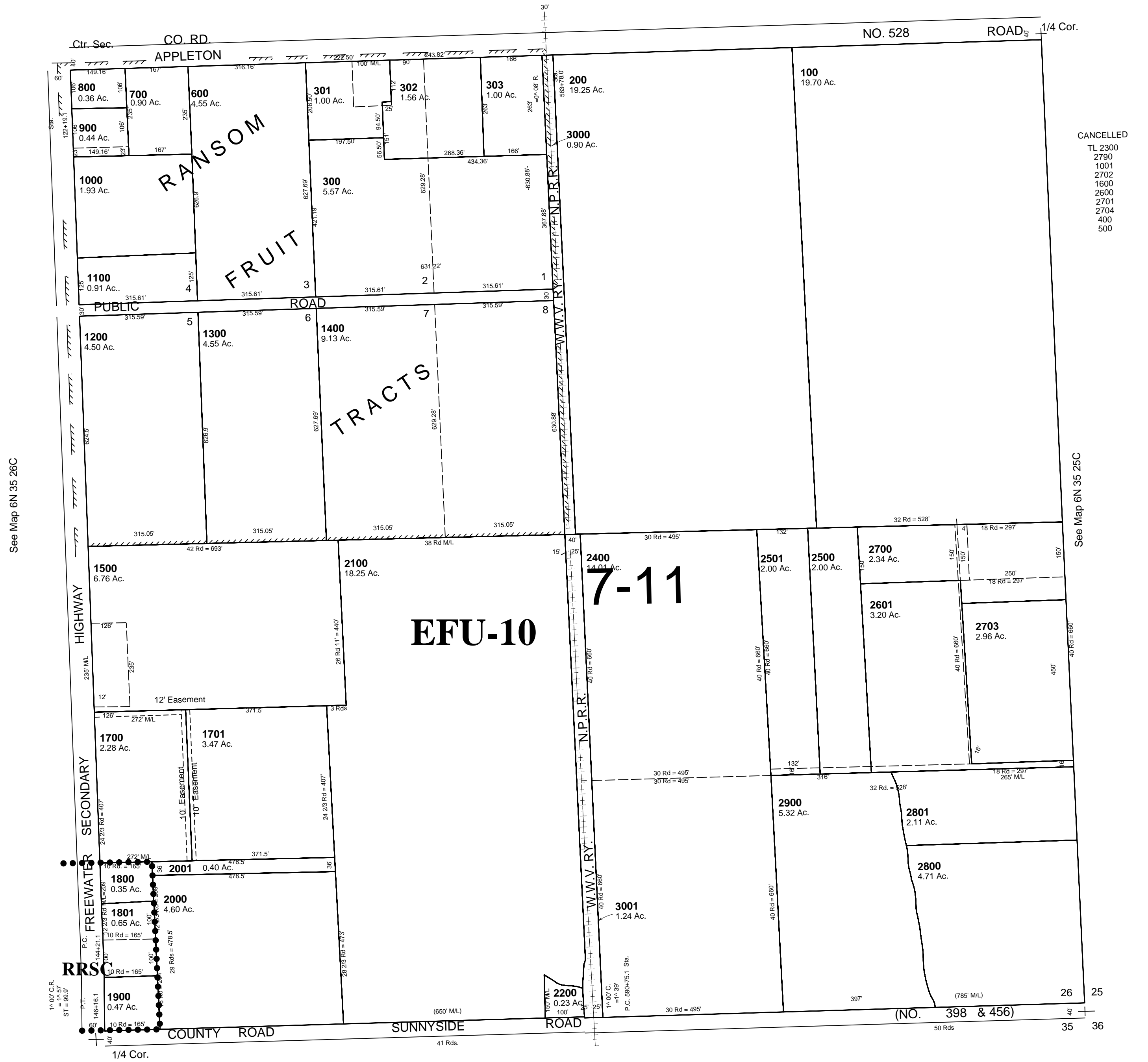
This map was prepared for assessment purposes

# SE 1/4 SEC 26 T6N R35E WM UMATILLA COUNTY SCALE 1"=200'

10/12/06

6N 35 26D  
AERIAL PHOTO NO., 6P-63

See Map 6N 35 26A



See Map 6N 35 26C

CANCELLED  
TL 2300  
2700  
1001  
2702  
1600  
2600  
2701  
2704  
400  
500

See Map 6N 35 25C

See Map 6N 35 35A

6N 35 26D