

This map was prepared for assessment purposes

4/6/06

See Map 5N 28 27DB

5N 28 27DC  
AERIAL PHOTO NO. NZ 1P-104

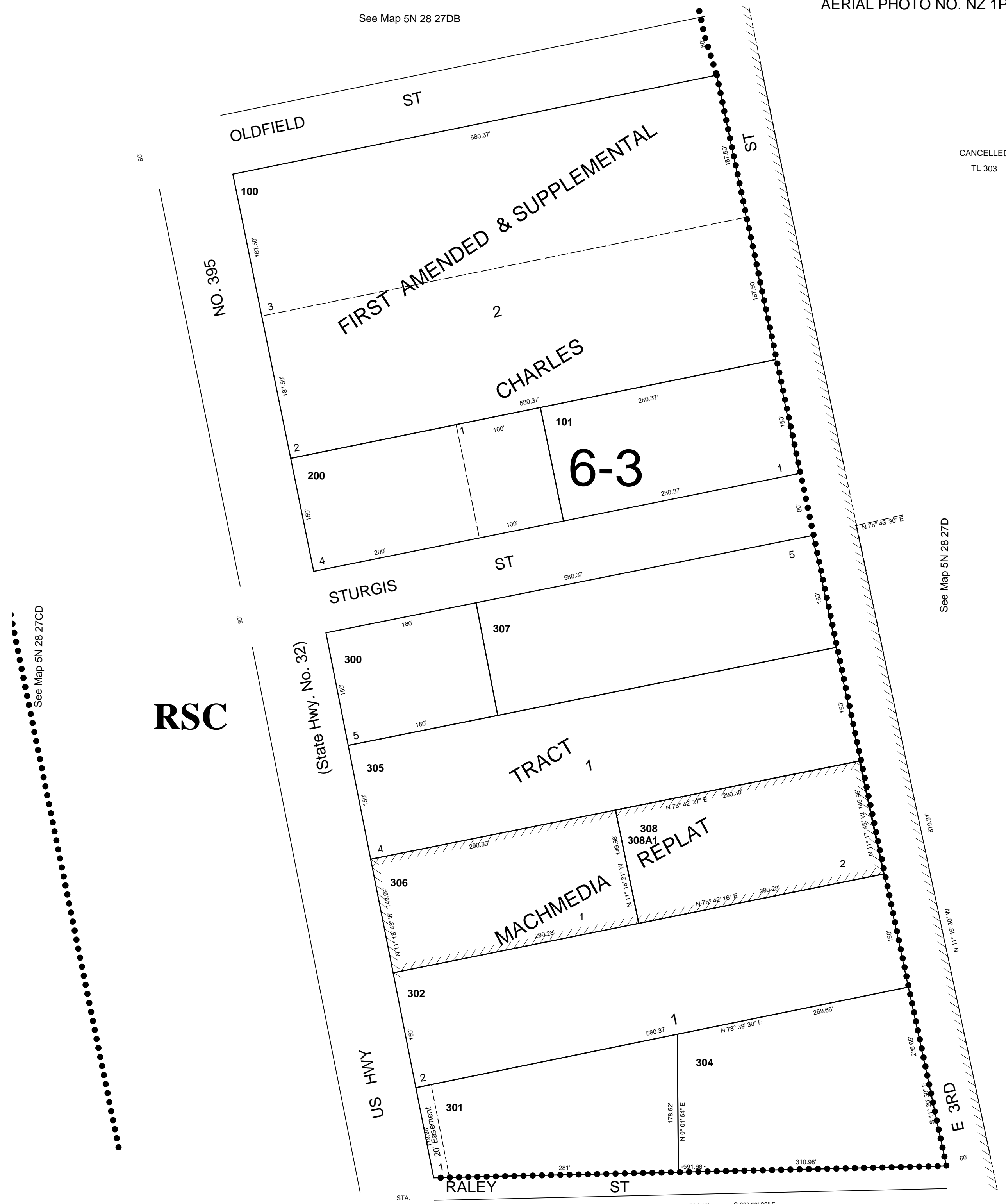
SW1/4 SE1/4 SEC 27  
T5N R28E WM  
UMATILLA COUNTY  
SCALE 1"=100'

CANCELLED  
TL 303

See Map 5N 28 27CD

RSC

See Map 5N 28 27D



STA.  
152+02.2

See Map 5N 28 D

5N 28 27DC