

This map was prepared for assessment purposes

SE1/4 NE1/4 SEC 18 T5N R28E WM

4/5/06

5N 28 18AD

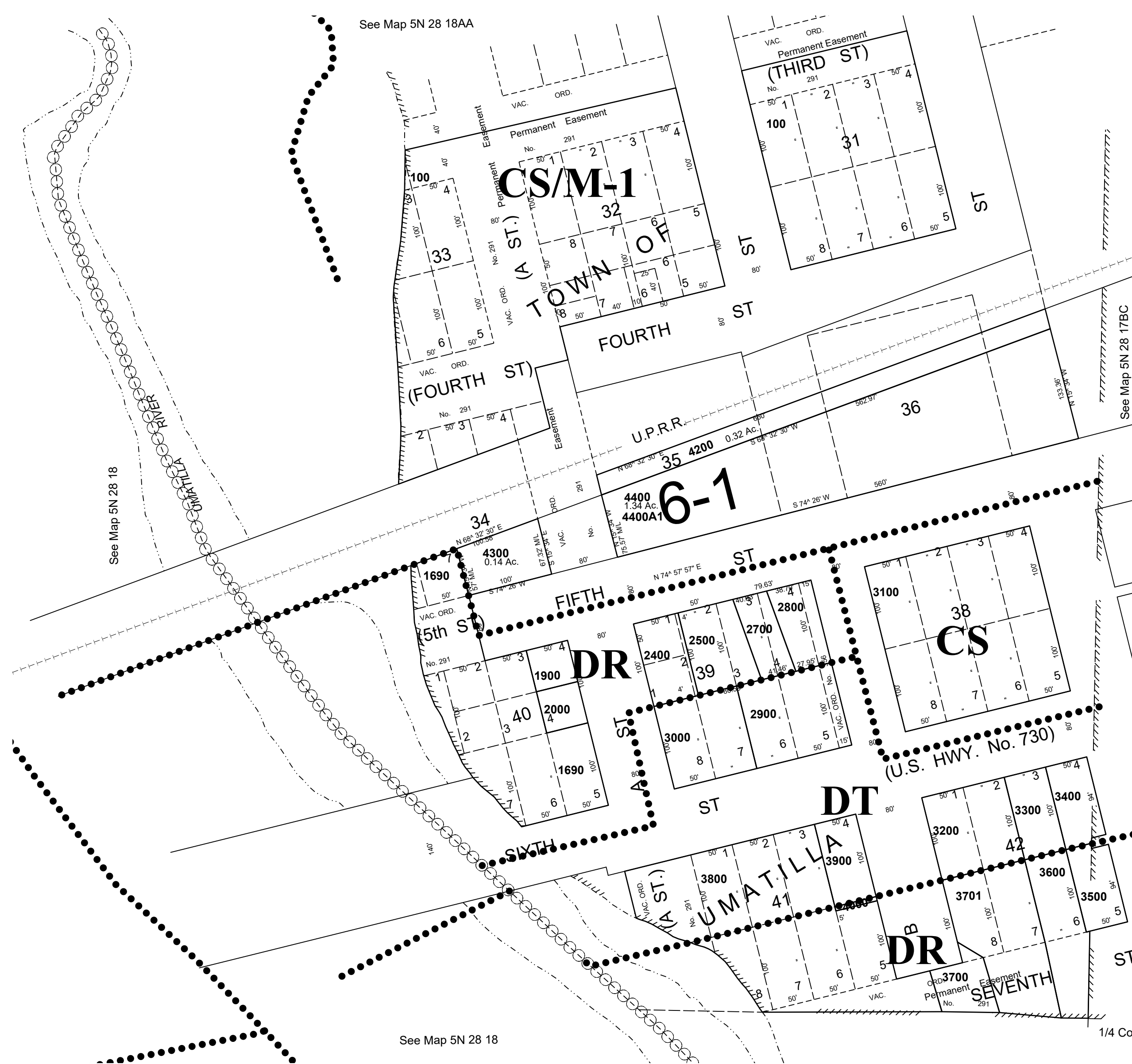
AERIAL PHOTO NO. NZ 1P-57

UMATILLA COUNTY

City of Umatilla

SCALE 1"=100'

See FIRM for areas subject to flooding



5N 28 18AD