

This map was prepared for Assessment and Taxation purposes and has NOT been prepared for legal, engineering or surveying purposes.

NE1/4 NW1/4 SEC 24 T4S R31E WM

5/18/06

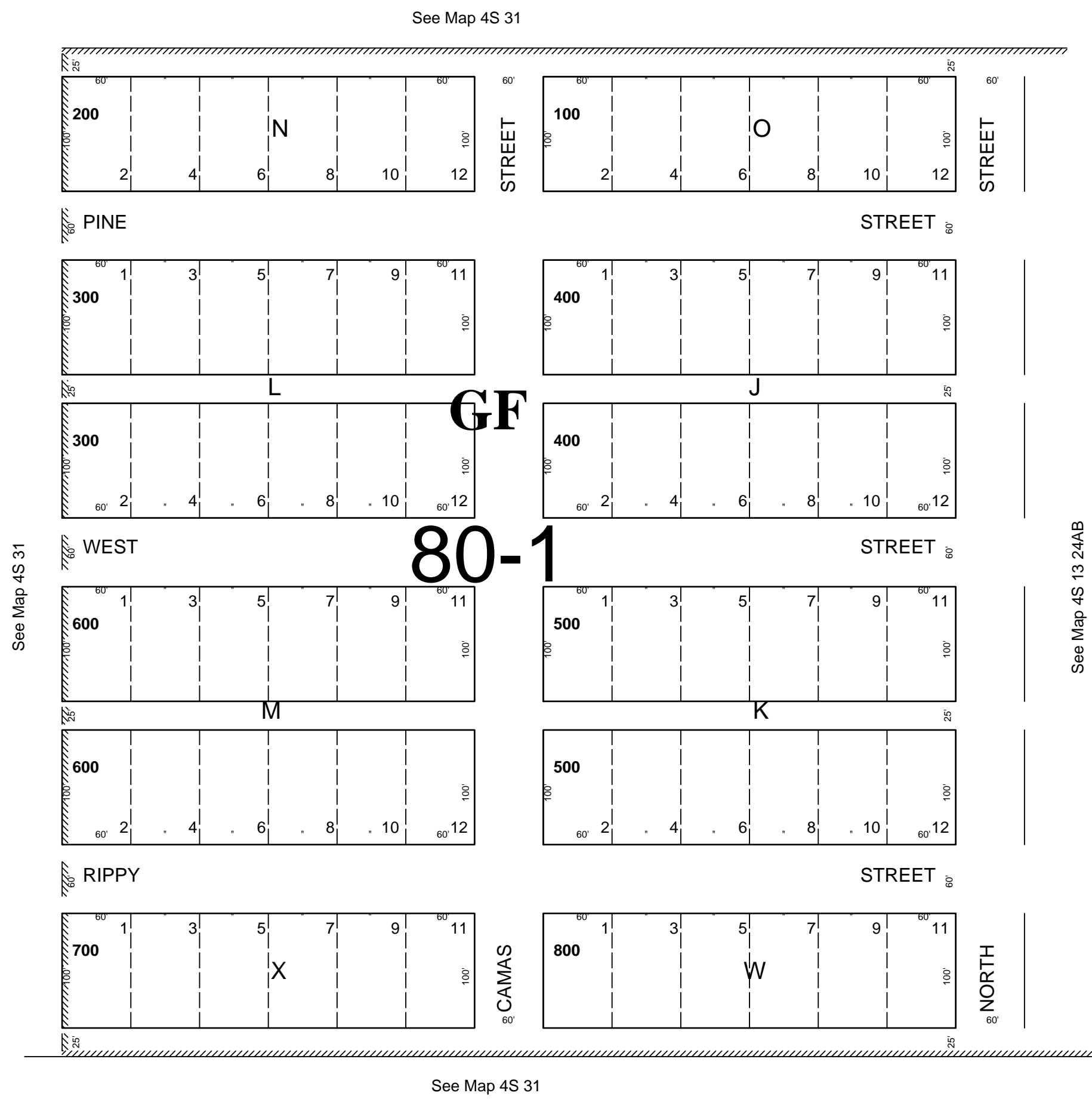
4S 31 24BA

UMATILLA COUNTY

AERIAL PHOTO NO. 11P-27

ALBA (ALBEE)

SCALE 1"=100'



4S 31 24BA