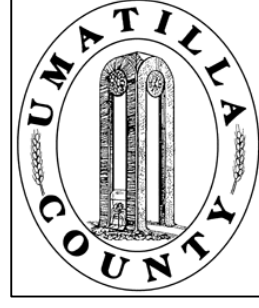


This map was prepared for Assessment purposes only.  
5/27/03



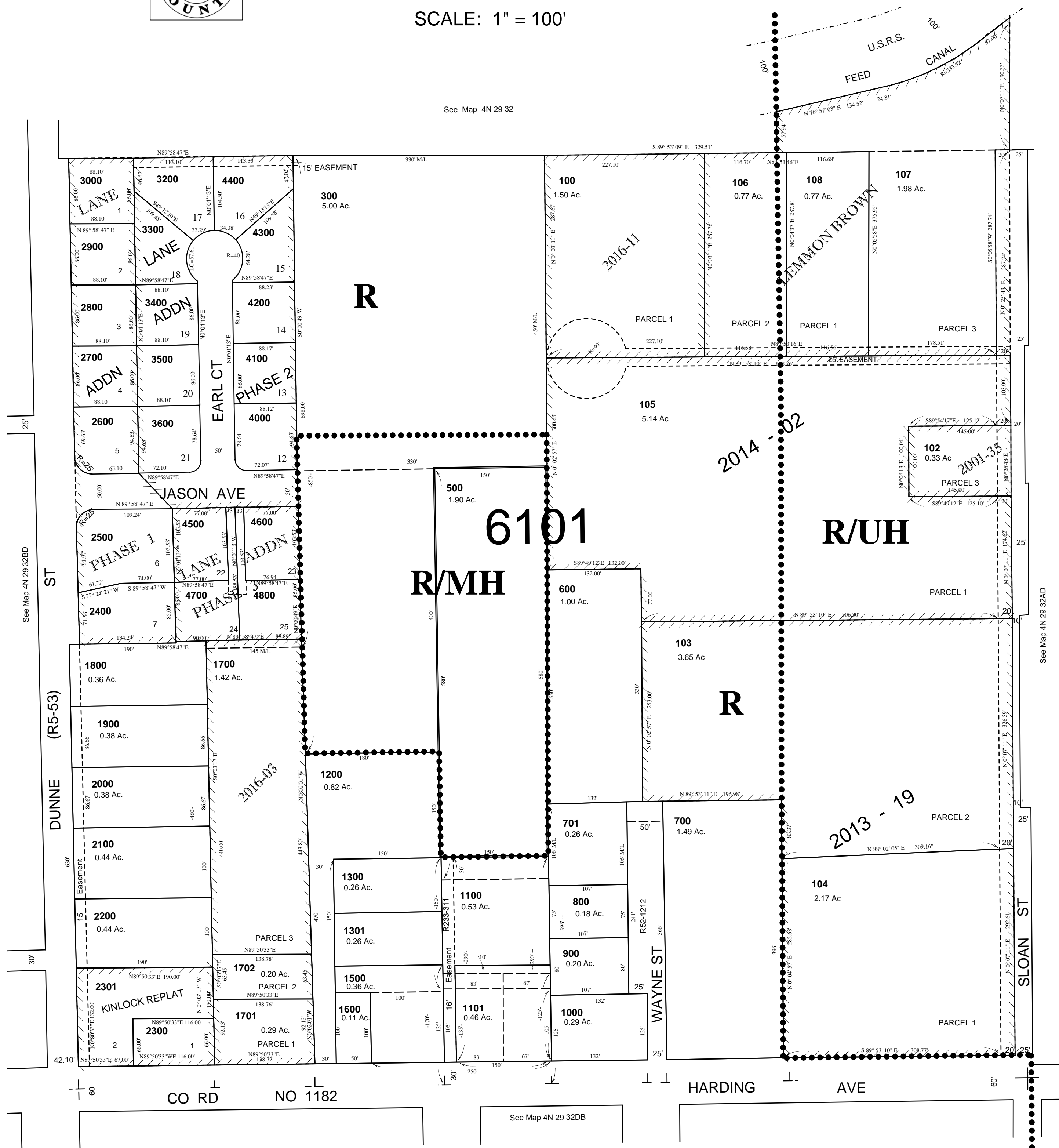
SW1/4 NE1/4 SEC 32 T4N R29E WM

UMATILLA COUNTY, OR

SCALE: 1" = 100'

4N2932AC  
City of Stanfield

See FEMA FIRM for areas subject to flooding



See Map 4N 29 32

See Map 4N 29 32BD

See Map 4N 29 32AD

See Map 4N 29 32DB

4N2932AC