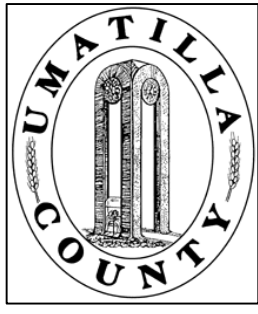


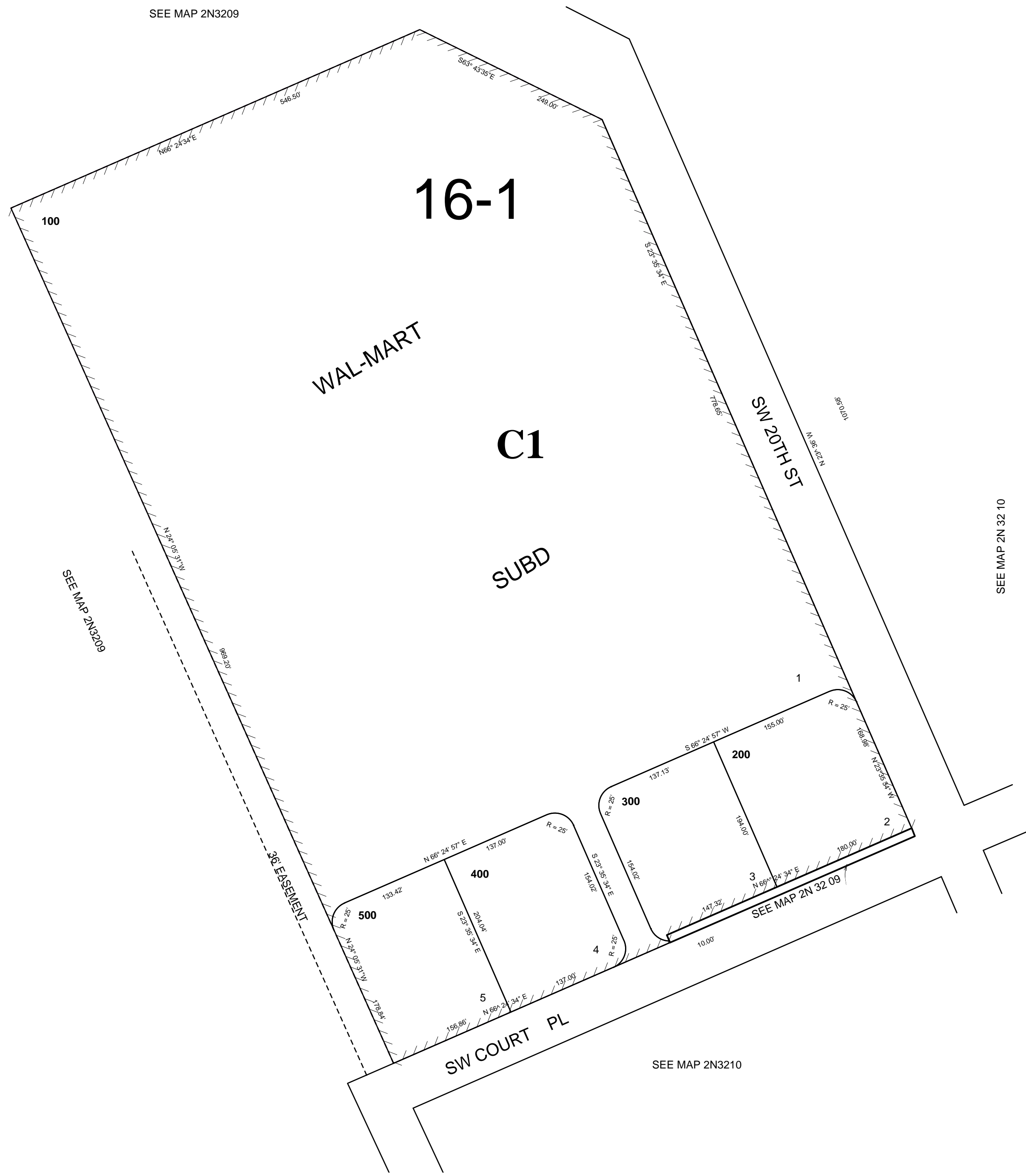
This map was prepared for Assessment & Taxation purposes only and was NOT prepared nor is it suitable for legal, engineering or surveying purposes.



SE1/4 NE1/4 SEC 9 T2N R32E WM UMATILLA COUNTY, OR

SCALE: 1" = 100'

2N3209AC
AERIAL PHOTO NO 4P-104
CITY OF PENDLETON



Revised: 8/6/09

2N3209AC