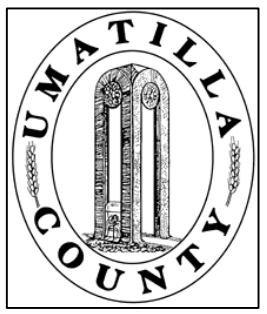


This map was prepared for Assessment & Taxation purposes and was not prepared nor is it suitable for legal, engineering or surveying purposes.

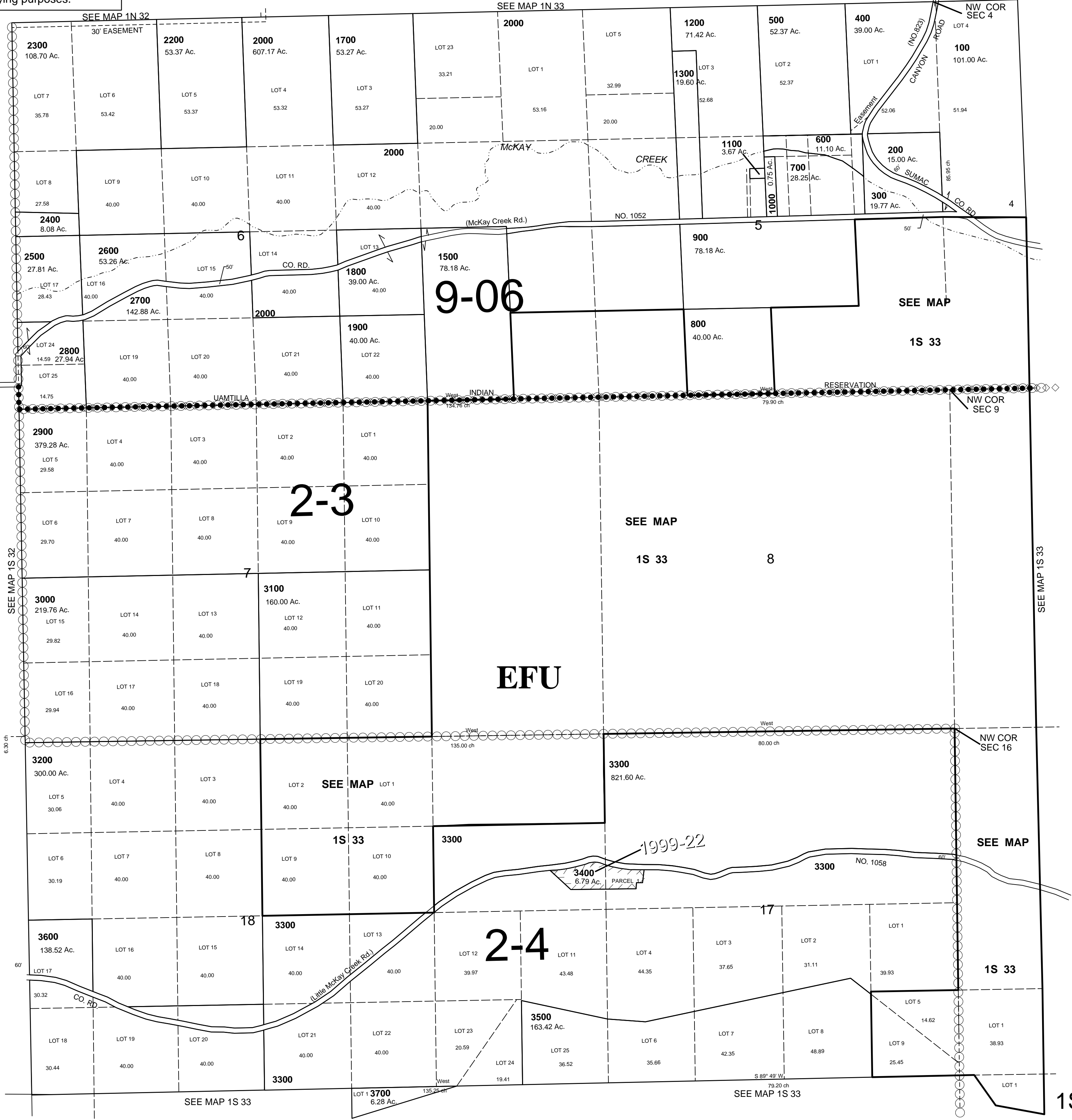
# NW 1/4 T1S R33E WM UMATILLA COUNTY, OR

3/31/08

1S 33B  
AERIAL PHOTO NO. 7P 17-23, 74-79 & 98-106



SCALE: 1" = 1000'



1S 33B