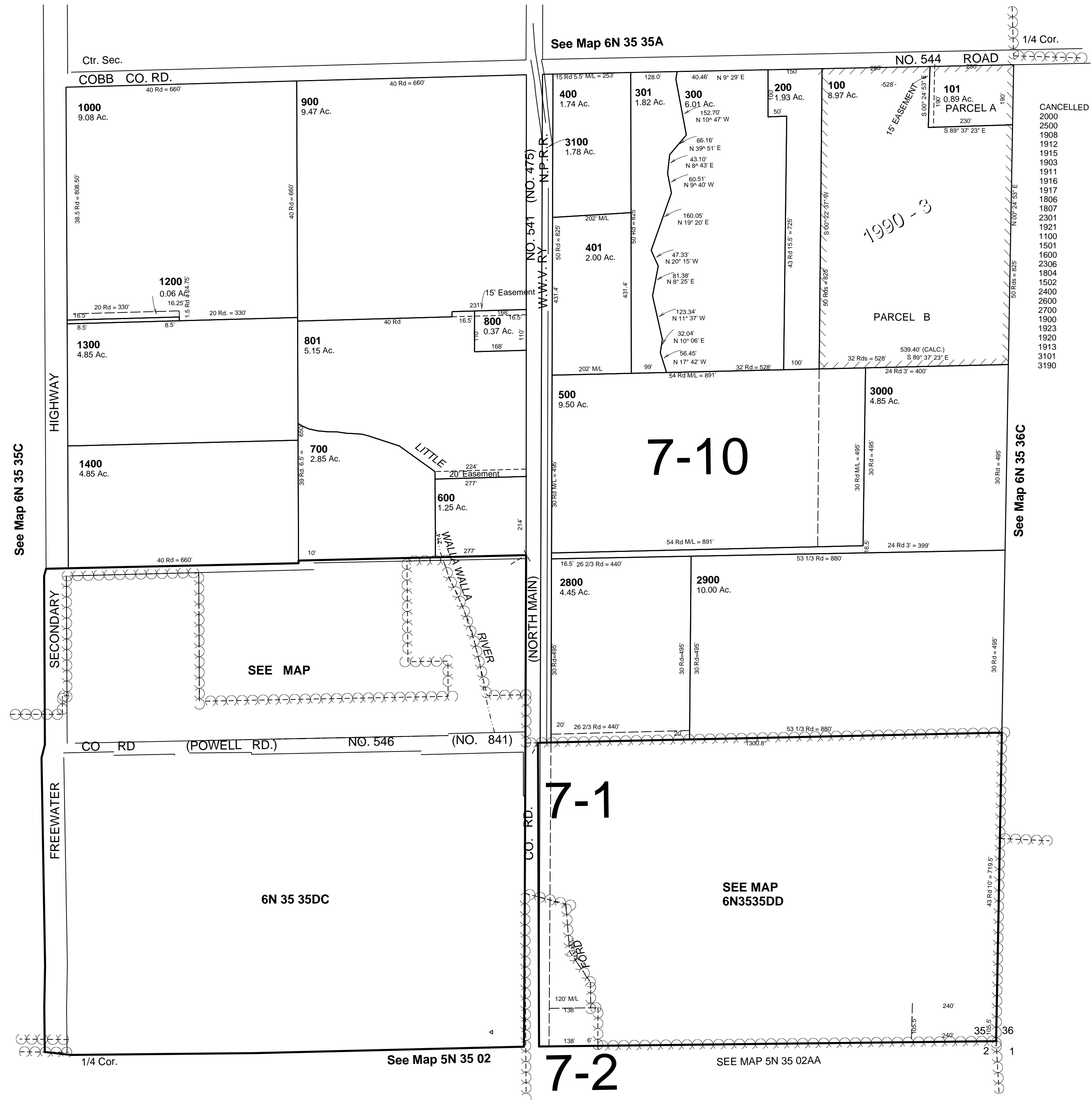


This map was prepared for Assessment & Taxation purposes only and has not been prepared for legal, engineering or surveying purposes.

SE1/4 SEC 35 T6N R35E WM
UMATILLA COUNTY
SCALE 1"=200'

REVISED: 6/02/08

6N 35 35D
AERIAL PHOTO NO. 6P-53



6N 35 35D