

This map was prepared for Assessment & Taxation purposes only and was NOT prepared nor is it suitable for legal, engineering or surveying purposes.

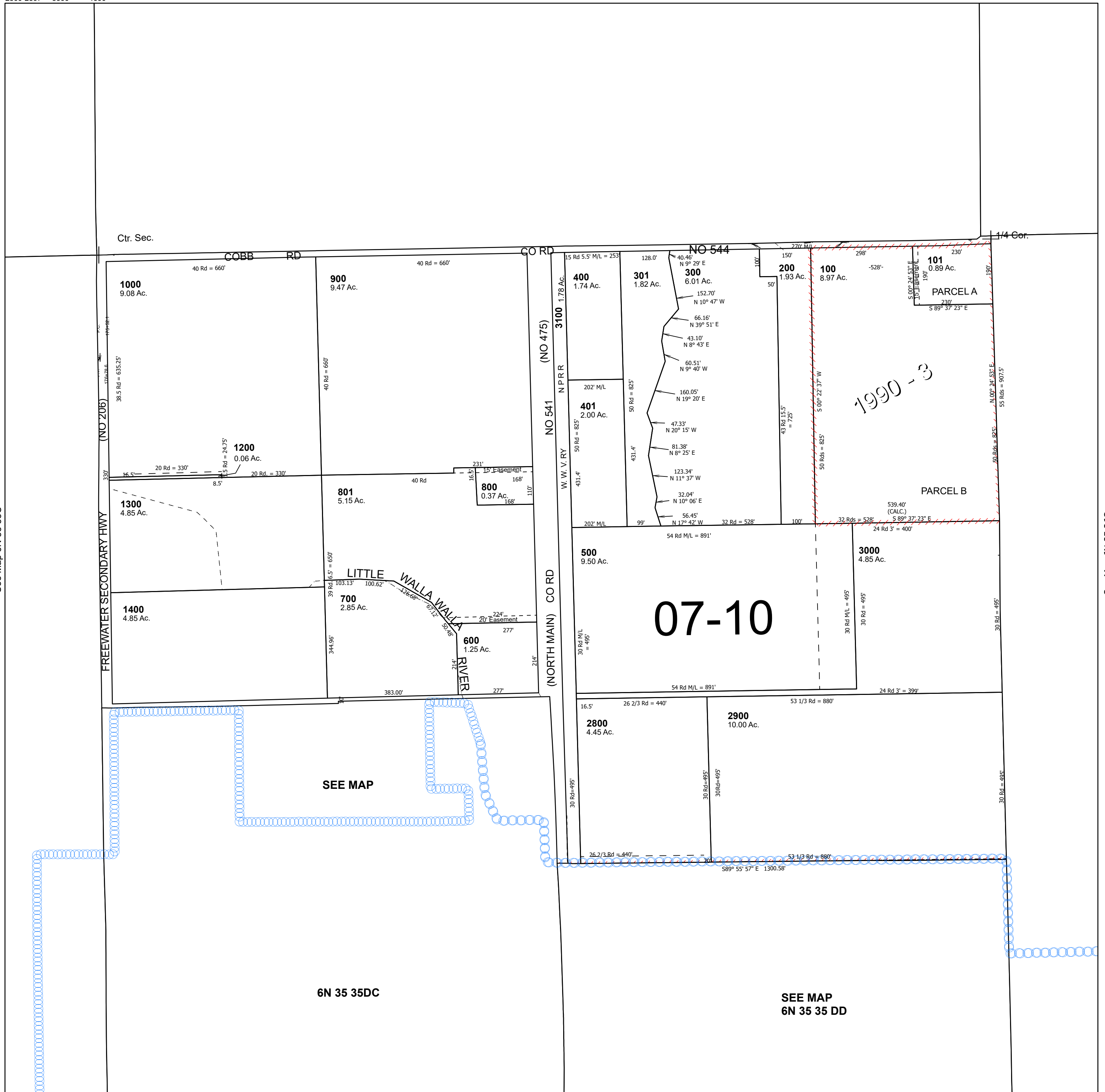
SE 1/4 SEC 35 T6N R35E WM UMATILLA COUNTY

6N 35 35D

SCALE 1" = 200'

See Map 6N 35 35A

Cancelled Tax Lots			
1100	2400	3700	90000
1500-1504	2500	3800	
1600	2600	3900	
1700	2700	4000	
1800-1809	3190	4100	
1900-1925	3200	4200	
2000	3300	4300	
2100	3400	4400	
2200	3500	4500	
2300-2307	3600	4600	



See Map 6N 35 35C

See Map 6N 35 36C

6N 35 35D