

This map was prepared for Assessment & Taxation purposes only and was NOT prepared nor is it suitable for legal, engineering or surveying purposes.

Cancelled Tax Lots

102  
200  
2402

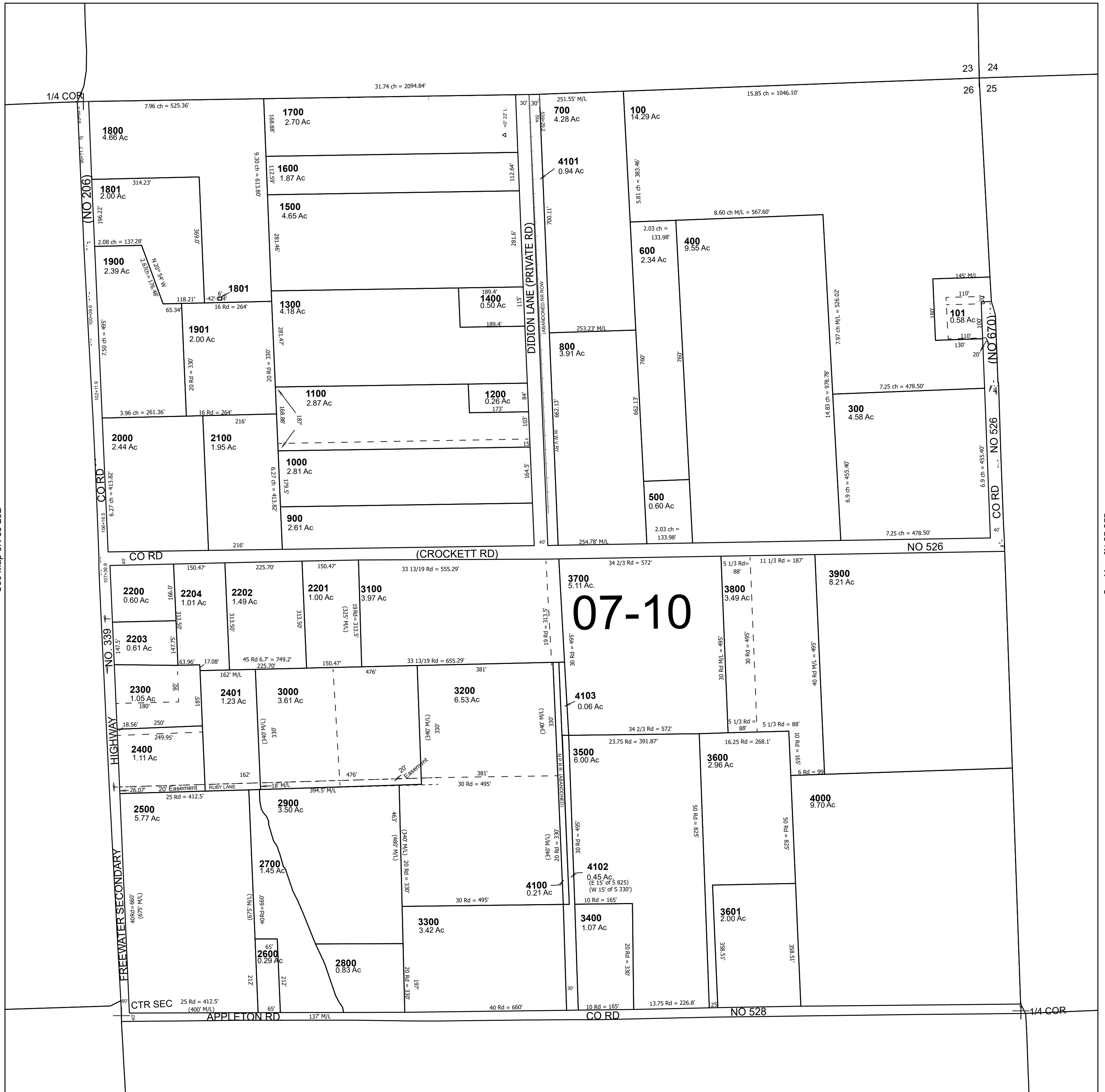
# NE 1/4 SEC 26 T6N R35E WM

# 6N 35 26A

## UMATILLA COUNTY

SCALE 1" = 200'

See Map 6N 35 23D



See Map 6N 35 26B

See Map 6N 35 25B