

This map was prepared for Assessment & Taxation purposes only and was NOT prepared nor is it suitable for legal, engineering or surveying purposes.

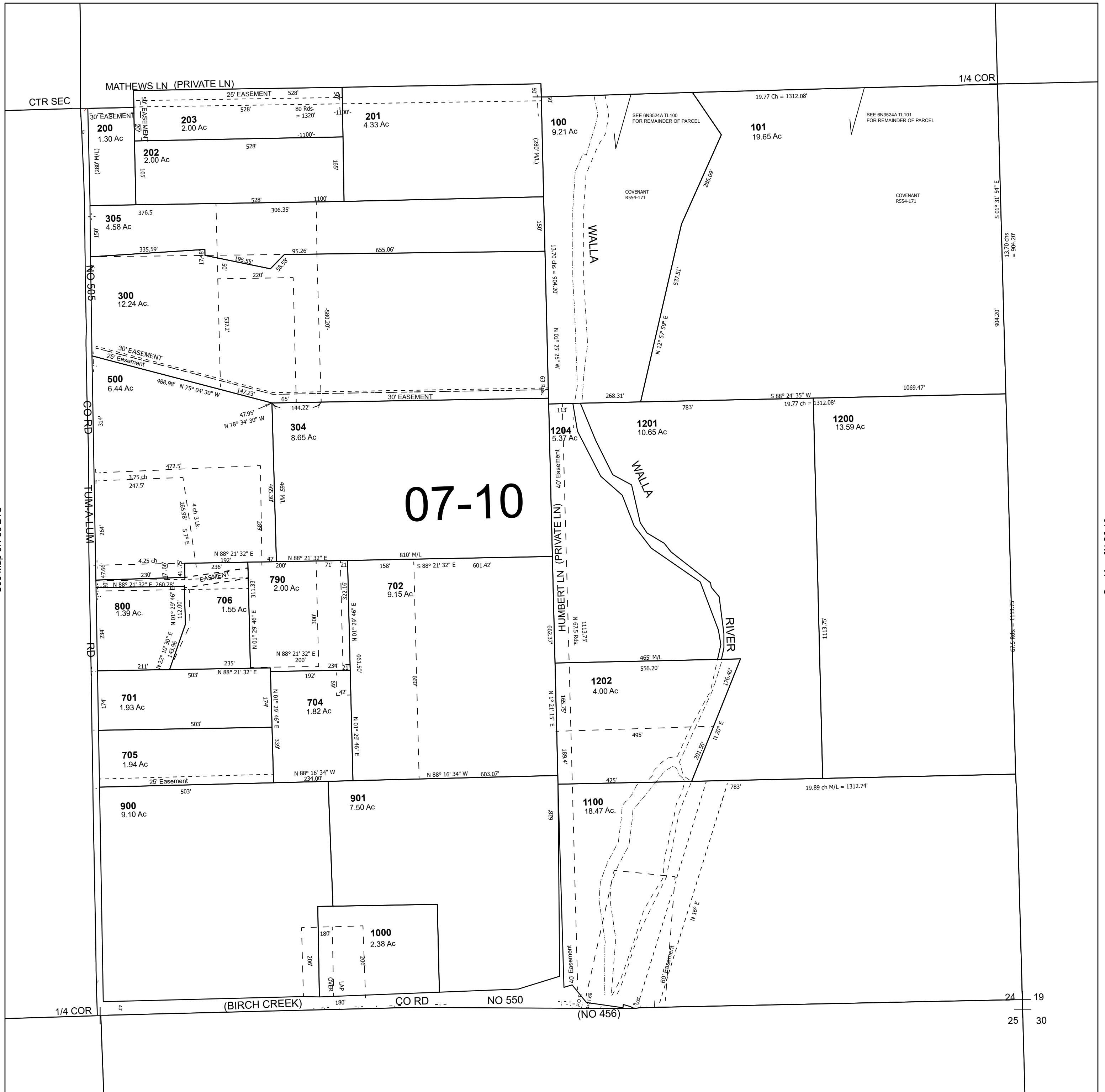
SE 1/4 SEC 24 T6N R35E WM UMATILLA COUNTY SCALE 1" = 200'

6N 35 24D

Cancelled Tax Lots

- 302
- 303
- 400
- 600
- 700
- 703
- 301
- 1203

See Map 6N 35 24A



See Map 6N 35 24C

See Map 6N 36 19

Revised 2/28/2025

See Map 6N 35 25A

6N 35 24D