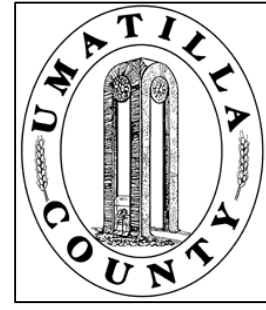


This map was prepared for Assessment & Taxation purposes only and was NOT prepared nor is it suitable for legal, engineering or surveying purposes.



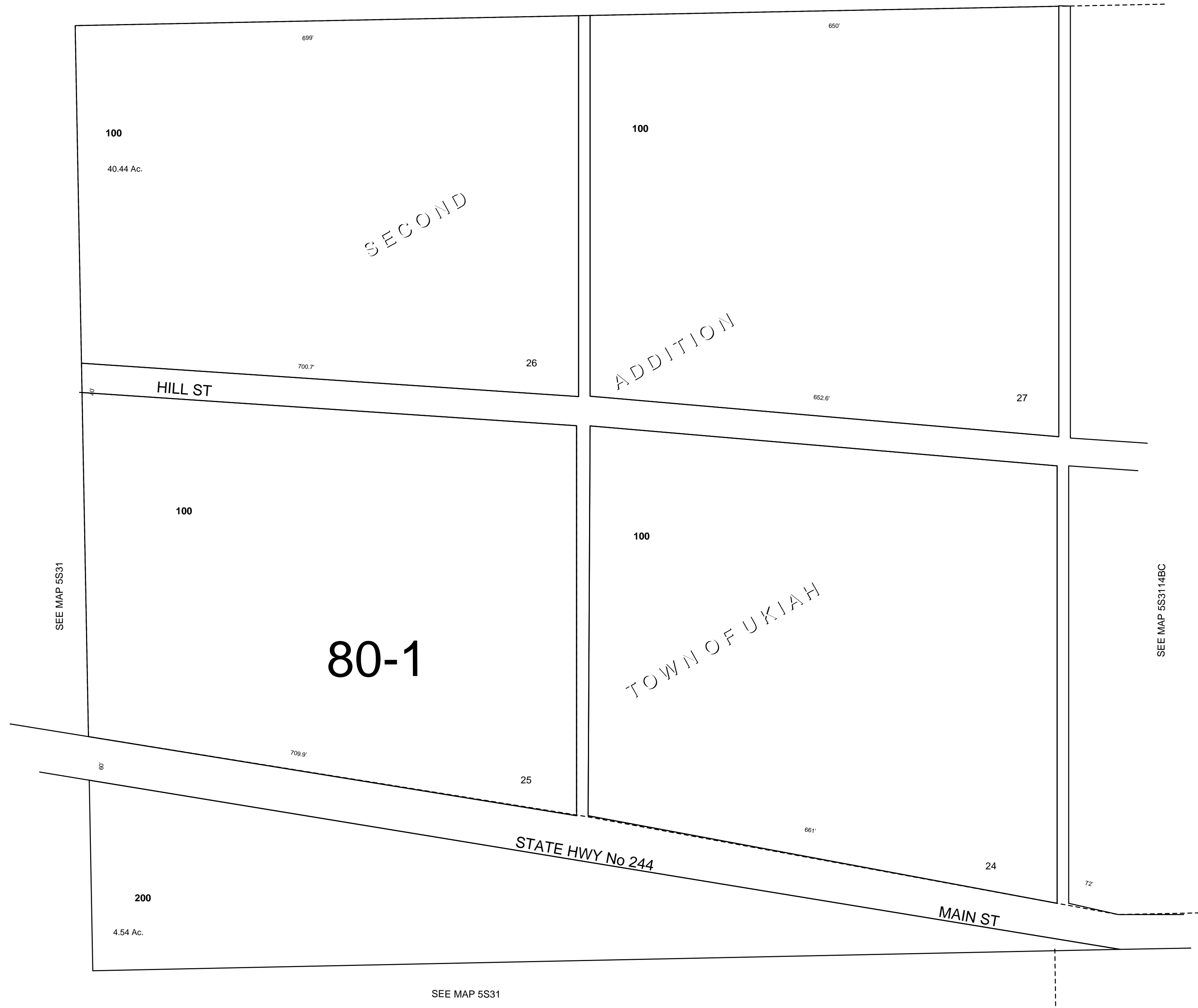
SE1/4 NE1/4 SEC 15 T5S R31E WM
UMATILLA COUNTY, OR

5S 31 15AD

SCALE: 1" = 100'

4/22/04

SEE MAP 5S31



SEE MAP 5S31

5S 311 5AD