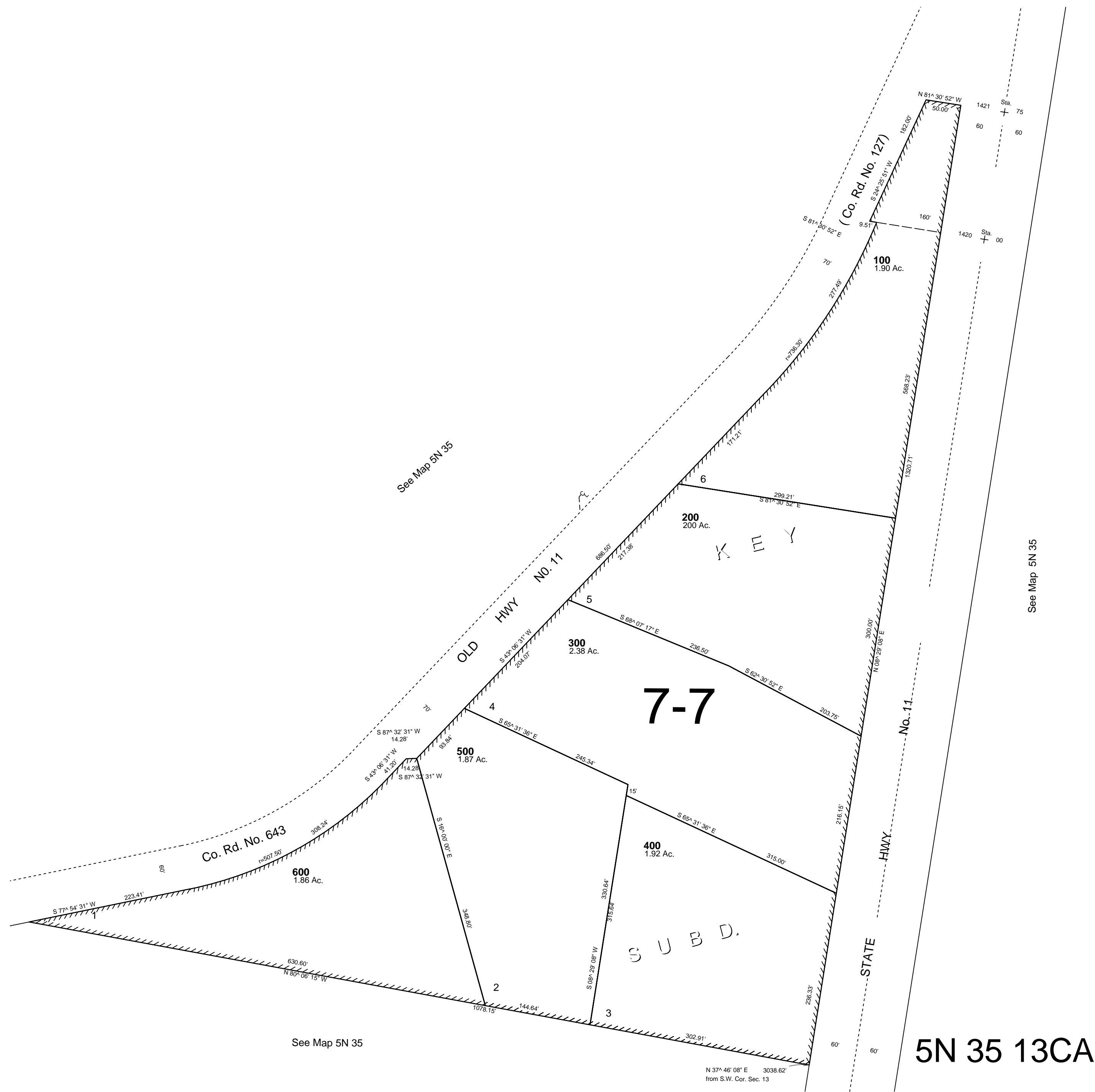


This map was prepared for assessment purposes

NE1/4 SW1/4 SEC 13 T5N R35E WM  
UMATILLA COUNTY  
SCALE 1"=100'

10/04/06

5N 35 13CA



See Map 5N 35

N 37° 46' 08" E 3038.62'  
from S.W. Cor. Sec. 13

5N 35 13CA