

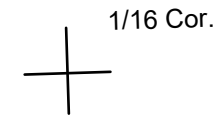
This map was prepared  
for assessment purposes

# SE1/4 NE1/4 SEC 14 T5N R29E WM UMATILLA COUNTY

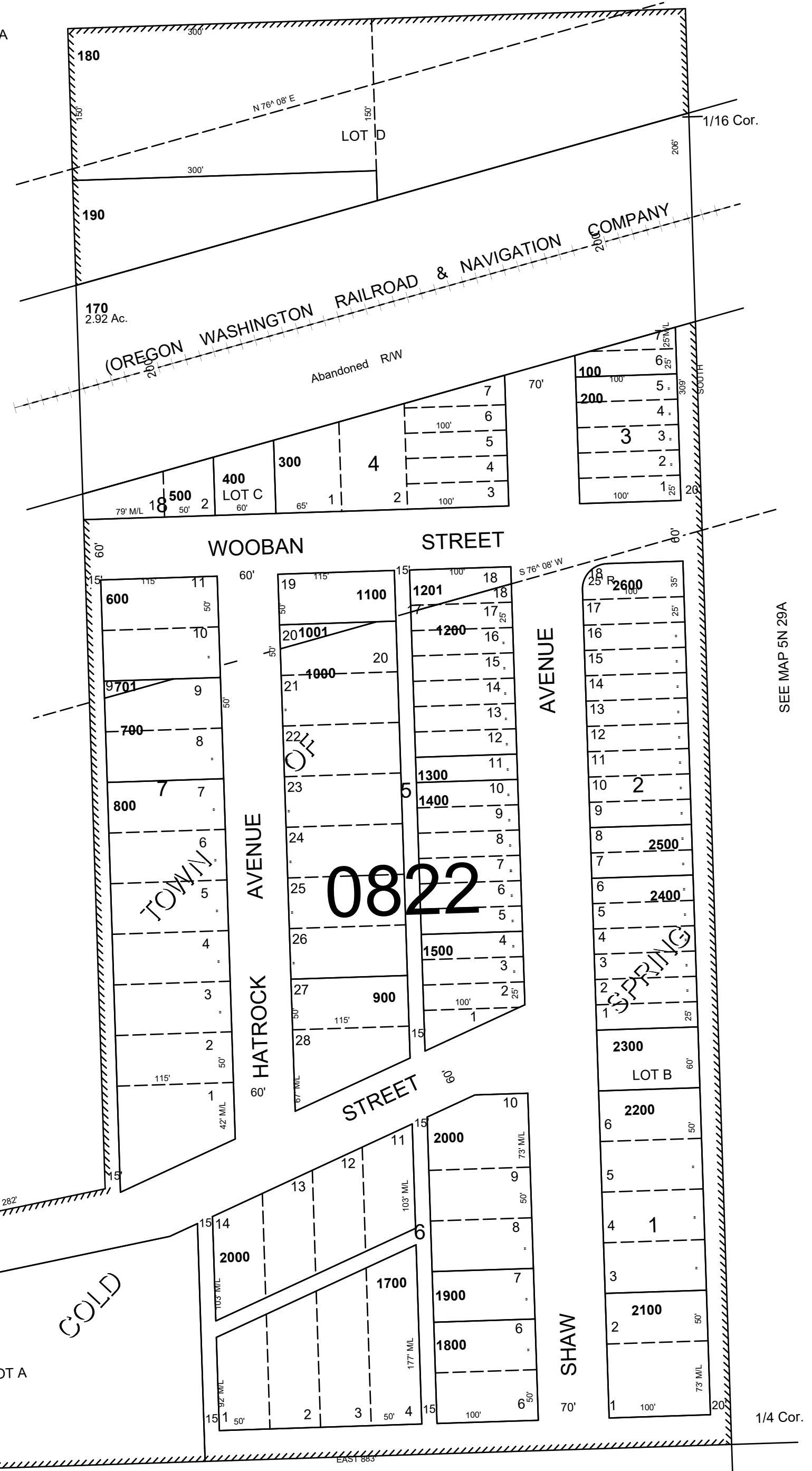
1"=100'

## 5N 29 14AD

AERIAL PHOTO NO. 1P-65

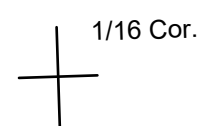


SEE MAP 5N 29A



See Map 5N 29A

SEE MAP 5N 29A



SEE MAP 5N 29A

REVISED: 05-26-2020

## 5N 29 14AD